

THE WINNEBAGOLAND WHISTLE

THE OFFICIAL PUBLICATION OF THE WINNEBAGOLAND DIVISION
MIDWEST REGION – NATIONAL MODEL RAILROAD ASSOCIATION

VOLUME 50, ISSUE No. 3

FALL 2017

“A negative thought is like a runaway train on a one-track mind, whilst a loving soul gently lifts the hearts of all mankind.”

COVER PHOTO:

The Wisconsin Central's 1882 Oshkosh passenger depot was located on the east side of the main line between Church and Algoma Streets.

This view, looking southeast, was taken in the 1930's.

The depot was razed in 1951 after the new depot was opened on 18th Street.

*Oshkosh Public Museum Collection
Reprinted from the Spring 1987 Whistle.*



IN THIS ISSUE:

Editor's Note **2**

Meet Vern Ehlke,
Chief Clerk! **3**

Unmanned Trains **4**

Whistle 1987 **5-7**

Whistle 1997 **8-10**

Gehry Model RR
Museum? **11**

On the Ready Track **12**

Superintendent's Report

By John Leow

We have a monthly round-robin model railroad group up here in Marquette – a pretty diverse bunch whose members model various gauges, scales, eras, and locales. Like all gatherings of model railroaders, these meetings run the gamut from fairly serious operating to flat-out bull sessions. We also use these meetings as an opportunity to dispose of our junk – er, surplus hobby items. A recent meeting was at the home of one of our older members, who also happens to be British, and who models a British prototype. Well, he had several piles of old British modeling magazines that he wanted to get rid of, and encouraged us all to take some home with us. He had bags available. Being the packrat that I am, I gladly obliged.

As I went through the various magazines at home, the slogan on the cover of one 1960s issue – “For the average enthusiast” - caught my eye.

Do any of us really want to be “average”? Deep down, don't we all aspire to be better than that? I hope so. But improving our modeling doesn't just happen – we have to work at it. Like any other skill, we need to keep challenging ourselves in order to improve. So don't be content with building the same type of kits you're used to. Branch out. Try something new. If you build mostly plastic kits, try something in wood. If you feel you've already mastered building kits, try scratch-building. Add brake rigging to your next freight car, or try a new weathering technique on your next structure.

(Continued on page 2)



Superintendent's Report

(Continued from page 1)

And ask for feedback from your fellow modelers. I once read a commentary by Jim Findley, who wrote many articles for *Model Railroader* in the 60s and 70s, and was friends with John Allen. When Jim proudly showed off a new model at one of their get-togethers, John offered to photograph it for him. Well, when Jim saw the photographs he was appalled at just how sloppy his modeling was. The point is, sometimes we are just too close to our work to objectively critique it. It's not bad to get some constructive criticism. Getting your models evaluated at our Division meets is a great way to accomplish this.

Which reminds me – our Fall Meet in Sheboygan is almost upon us! If you haven't already registered, there's still time, but hurry! It's going to be a great meet, with lots of information and the usual fellowship. And the annual WLD Operation Session will be coming up on November 4th, so be sure to mark your calendars for that. And while your calendars are out, be sure to mark April 8, 2018 – the tentative date for our Spring Meet in Merrill. Keep your eyes peeled for more details.

So pack up your models and photos for the contests (or just to show off), jump in the car, and I'll see you in Sheboygan on October 7th!



JMD PLASTICS AND HOBBY

The LARGEST model railroad shop north of Milwaukee and east of Minneapolis!

We specialize in HO, N, O, G and HO_n3 scales!

We BEAT all advertised prices from ANY online or brick and mortar store, GUARANTEED! (M.A.P. priced items excluded)

**Looking for consignments of good used HO, N, O, and G scale locomotives, freight/passenger cars, buildings, vehicles, and more!

**Also looking for consignments of railroad artifacts, lanterns, signs, timetables, hardware, dishes, silver, tools, etc...!

Don't sell for peanuts when we can get you more money for your items!

Decoder installations, repairs, custom painting and model building all at prices LOWER than the competition!

1800 Scheuring Road, Suite 6
DePere, WI 54115

TOLL FREE 888-249-7943

WEBSITE: www.jmdplasticsandhobby.com

EMAIL: jmdplasticsandhobby@jmdplastics.net

Editor's Note

By Todd M. Bushmaker

We're starting to get closer to the modern day, or at least within my contemporary memory, with a look back at the *Whistle* in 1987 and 1997, as we celebrate its 50th issue. The content reminded me of a few things from the past, not the least of which was the excitement I felt when the modern Wisconsin Central started up under the leadership of Ed Burkhardt... it was so great seeing what really could be done with some effort into what were considered "failing" or "marginal" lines by the bigger railroads. The fact that WC was engaging with the railfans and had a great paint scheme was icing on the cake. Too bad it didn't last!

I hope you've found this looking back as fun and rewarding as I have, with little snippets of the pulse of the Division through the years. I'm sure many members still have old issues stockpiled in their homes, but anyone wishing to delve a little deeper can contact the Soo Line Historical and Technical Society, which has a file of back issues in their archives in Appleton.

The flip side of that is looking forward! Where are we going as the Winnebago Division? What do YOU want to get out of your membership? How do YOU want to participate? What kinds of things should the Division be doing to expand our *modus operandi*? What would you like to see in the *Whistle*? Don't be shy, I'm looking for real, actual feedback!

Meanwhile, once again the colors outside are changing. For me this means winterizing and storing the camper and turning attention back to train shows. Now that my major summer work project has essentially wrapped up design, I hope to spend a few more hours this winter with my kids and diving back into my hobby workshop, catching up on neglected projects on my to-do list.

Despite not physically engaging my hobby since last February, I have kept up the engagement by participating as a board member in our Division's director meetings. And I am thankful for that outlet, the regular interaction with fellow modelers with an interest in the machinations of the Division. That's one of the many benefits of being part of such a great organization.

Make sure you take part in another of those benefits October 7th in Sheboygan at our Fall Meet. While it's too late to sign up ahead, you're always welcome to just "pop in" and take in what the meet has to offer. It's a great way to catch up with friends, see what others are doing, and maybe learn a thing or two!

Until then, keep on trainin'! —Todd
tbushmaker@sbcglobal.net

Meet Your Officers

By Vern Ehlke, Chief Clerk

I have been interested in trains from a very young age. My dad was so sure that I was going to be a boy, he bought me a Marx train set before I was born. I still have that train set.

I started out with Lionel and Marx, but started delving into HO scale in high school. The detail and proportions of the O27 always bothered me, and I found it was much easier to “suspend disbelief” with HO scale. Growing up with two brothers and two sisters, we didn't have a lot of extra room for hobbies, but I was able to build a small layout which kept my interest until I graduated. That layout also cemented the fact that for me, cats and model railroading are two diametrically opposing forces. Model Railroader magazine had a cartoon in one issue where a guy with a layout was bricking a cat into a room in the basement. I don't remember the caption, but I remember feeling the same way. For the record, I do love all animals, some just work out better than others when your hobby is model railroading.

During my college years and living in apartments, having a layout wasn't an option. I did work on assembling kits and detail work on locomotives, but that was about the extent of my modeling. Living in the Chicago suburbs did afford me the opportunity to visit some great club layouts, and to get the to Great Midwest Train Show in Wheaton on a regular basis.

I met my wife Joyce in the late 80's and when we decided to get married, I moved back to the fox valley area. She and I both agreed that we would prefer to raise children in this area rather than the Chicago area.

When we bought our first house, I was able to build a small 'L' shaped layout in the basement, but having the first and second of our three kids didn't afford much time to work on the layout. It progressed to the point that scenery was started, but when kid number three was announced, the house became too small.

That precipitated the search for a new home, which of course had to have a layout room with some living quarters attached that were big enough for three kids. We



found our new home in Little Chute, and the house fit the bill nicely. Life with three very active children didn't leave much time for modeling; though I did manage to reassemble to layout from the previous house, but with all the family activities there wasn't much time for modeling. I am fortunate that Joyce and the kids were tolerant of my railroading addiction, and I was able to attend some train shows, and even the National when it was in Madison. They eventually got used to the idea that I didn't speed up to beat the trains at the crossings, and that we may take occasional detours on trips to do some rail fanning. Once when my daughter must have been about five, we were returning from a train meet somewhere and we passed a rail crossing where a train was awaiting a clear signal and she exclaimed “Daddy, what scale is that train?”. Life in the family of a train nut.

Life continued to dictate that modeling stay in the background. Joyce really enjoyed going to garden layouts, and we started collecting equipment to eventually build one ourselves in the back yard. The thought was that once the kids were off to college, we would have the time to build a backyard layout. Life, as usual, had other plans. Progressing to more recent events, the kids started going off to college, one by one. When Mark and Laura, the two oldest were in college, and Mike was a

(Continued on page 4)

(Continued from page 3)

junior in high school, Joyce became very ill with cancer. After a very difficult battle the cancer got the upper hand, and she passed away in 2014. She is missed very much by everyone. Her legacy lives on in all the lives that she touched both in her personal life and professional life as a speech therapist.

I have been a member of the NMRA since 1996. I don't exactly remember when I became a WLD board member, but I believe it was in the mid 2000's. For the last number of years, I have served as the clerk for the WLD. I am also a member of the Paper Valley Model Railroad Club in Combined Locks.

Although I have some equipment N, O, and G scale, HO scale where my time is spent, focusing on the Soo Line in the late 1990's. Unfortunately, I have yet to progress beyond building a few modular platforms for testing shelf layout ideas, but life is slowly moving toward building a layout. I really enjoy how broad and multifaceted model railroading is as a hobby, and the number of interesting and talented people that I've met. As a hobby with aspects that range from history to carpentry, electronics to model building and operations, there is something of interest for everyone. My favorite aspect of the hobby is operations which encompasses fellowship with others and the challenges of running a miniature transportation system in the manner that the layout owner envisioned. I also enjoy helping others with their layouts when it comes to electronics and computers. With the advancements in communications, manufacturing and electronics, I only see this hobby as getting better. Model railroading is (generally) fun.



Todd M. Bushmaker AIA, LEED® AP
Project Architect | BIM-IT Support

122 East College Avenue, Suite 1G, Appleton, WI 54911
P.O. Box 8034, Appleton, WI 54912
920.380.2132 direct | 920.475.2881 mobile
920.731.2322 main | 920.380.2190 fax
tbushmaker@hoffman.net

While the auto industry is busy working on safely automating the transportation of humans, Australian-British mining giant Rio Tinto has already figured it out with freight.

On Monday (Oct. 2), the company completed its first fully-unmanned rail journey across the Western Australian desert. The train traversed nearly 100 km (62 miles) without a driver onboard, while Rio teams and Australian government representatives supervised real-time progress in control rooms from afar.

Until Monday, the company had only run its trains in manned, autonomous mode since the first quarter of this year. The unmanned pilot run puts the company on track to meet its goal of building a fully autonomous heavy-haul, long-distance train network by late 2018.

Rio already runs 71 autonomous trucks that move around 20% of the materials from its iron ore operations. Along with its manned, autonomous trains, the company's operations have been more reliable and faster. It expects the program to bring further safety and productivity improvements.



The technology capable of creating autonomous trains has been around for a long time. Since the 1960s, reports Wired, robotrains have run in a limited capacity. The biggest problem facing wide adoption, however, was how much time trains need to react to an upcoming obstacle. Coupled with resistance from union workers and poor economic incentives, interest stayed low.

But Rio appears to have finally cracked the case, and its fully autonomous network should arrive next year—once it clears safety and regulatory approval.

The Whistle at Fifty: 1987

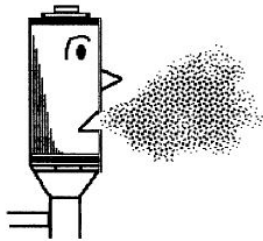
Scans courtesy of SLHTS.

1987... I was a Junior at Green Bay Southwest, listening to *Hysteria* and *Slippery When Wet* while Ronny and Mikhail negotiated the future. This was also when everyone's favorite but tragically short-lived regional, the modern Wisconsin Central, came out of the ashes of SOO's Lake States division, as you will see in the following pages. Wally Rogers was wrapping up his time as our Superintendent, and SLHTS under Jerry Thompson was just figuring out what to do with a growing inventory.

As for the Whistle, some of the content was now computer-generated (probably on an early Mac), though you can still see the paste-up nature of the still half-page publication. Anyone know what happened to Al Krueger?

WINNEBAGOLAND WHISTLE

VOL. 20 NO. 1 ...Published by the WinnebagoLand Division - MWR - NMRA... WINTER 1987



Count Down to Oshkosh

As the clock is racing me to the wee hours of Easter Sunday (and winning) our spring meet is only two short weeks away. A lot of hard work has been done and some is still ahead.

With the Sale of the Lake States Div. of the SOO LINE to Wisconsin Central LTD. our own Soo/Milw Paint contest takes on additional interest. Will they use the Wisconsin Central Shield? And what are they going to paint the locos? Will some modeler anticipate the new owners? I would kill for a Maroon & Gold GP30!

Lake States Sold

PAGE 8

Ride the Northwoods 400

PAGE 9

C&NW Changes in the Valley

PAGE 15

Wally Rogers has served his term as Superintendent and will be stepping down at Oshkosh. We will have our annual meeting of the membership to elect our new officers. Here are the Candidates:

Superintendent - Terry Kranz
Asst. Superintendent - Allen Myer
Chief Clerk - Andre Pichette
Paymaster - Marjorie Zergiebel

We need some additional members for the Board of Directors, if you would like to help Model Railroading here is your chance, just ask Terry at Oshkosh.

the WHISTLE


EDITOR AND PUBLISHER

ALBERT W. KRUEGER
BOX 2605
OSHKOSH, WI 54903-2605
414-233-4174

STATEMENT OF POLICY

The WinnebagoLand Whistle is published quarterly and distributed free to NMRA members and interested railroaders in the WinnebagoLand Division, MWR, NMRA. Subscriptions for others is \$1.00 per year.

To purchase advertising or enter a subscription, contact the editor at Box 2605 Oshkosh, WI 54903-2605



When In Green Bay, Wisconsin
Don't Forget To Visit

NATIONAL RAILROAD MUSEUM'S
"RAIL AMERICA"

2285 South Broadway
414-435-5875

EDITORIAL CONTRIBUTIONS

The editor is pleased to receive contributions to the WinnebagoLand Whistle in the form of articles, news stories, and letters.

The editor reserves the right to edit all contributions to fit space available.



SUPPORT YOUR DIVISION

WAUPACA AREA MODEL RAILROADERS

" On The Right Track "

No dues
No officers
No meetings
" Just Plain Fun "

Waupaca Eastern
Evergreen Hills & Allen Creek
Lanark and Western
Jefferson, Beckville & Western
Burlington Northern
Lind Center and Southern
Waupaca Southwestern
Crazyhorse and Hatton



PENOSKEE GRANDVIEW & WINNIPEG RAILROAD COMPANY

RALPH REBLITZ, President



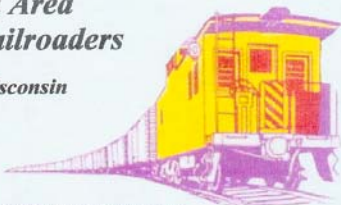
PG
EW

GENERAL OFFICES
1026 East Duane Street
Marion, Wisconsin 53401

PAGE 2 --- THE WHISTLE

Waupaca Area Model Railroaders

Waupaca, Wisconsin



Home of

- Award winning Modular Layout
- Strawberry Fest Train Show & Model Contest
- Model Railroading Fun
- Keep up with our activities by reading *The Crummy* on our website: www.wamrltrd.com

Contact us at wamrcrummy@yahoo.com
Visit us at www.wamrltd.com or



Mark's Model Railservices

Mark Preussler

2007 Lake Aire Dr.
Sheboygan, WI 53081
Phone (920) 451-9691

e-mail: markshelly@excel.net

Griswold Signals/ Custom Painting/ Loco Repair
"Custom Products and Services
For Model Railroaders".

E-bay e-store: Marks Model Railservices
Website: www.marksmode railroading.com

The Whistle at Fifty: 1987

Look at that early WC roster, cobbled together from the purchase. Gotta love those ex-MILW SDL-39's!

Neenah-Menasha Railroad Club

In December we held our annual open house. It was the best we ever had. People were coming constantly and the trains never stopped running.

This is going to be a good year for the Neenah-Menasha Model Railroad Club. We have several new members and a lot of enthusiasm.

Our HO section, up-stairs, which has been dormant for several years is alive and in full swing. Lots of new wiring has been put in and new track has been laid. The Fox Lake section has been completely rebuilt with hand-laid track. About 75 feet of track with 7 turnouts and etc.

There are even plots of land for sale, if you want to build on it, you buy it and it's yours to do with as you wish.

The D scale has been very busy for the past two years, but now is going to be even more so. A new project, a center island called Lake Wobegon, has begun. The benchwork is in and track is being laid. Lots of new track has yet to be lain, turnouts to be put in, buildings to be made, scenery to do, painting etc. Not a dull moment with plenty to do.

We meet every Wednesday evening, starting around 7 or 7:30pm. We are always happy to have visitors and those interested in membership should stop by and see our club.

Linda Siehr
329 E. Franklin
Neenah, WI 54956

The Super's Corner

This is my last column in the Whistle as your superintendent. What with the Region Convention, buying and moving into another house, and ending my bachelorhood, everything has been just a blur in the past few months. Hanging up my super's hat will take some of the load off, but I'm sure that something else will occupy my time. I hope to be able to put on my engineer's cap and just enjoy model railroading now and then.

Don't read me wrong. I have enjoyed serving on the WLD board the past four years, and I hope to be able to help out in the future. It is a most rewarding experience. There is some very special fellowship among the directors. It is also exciting hashing out the various decisions that are discussed at the meetings.

I don't plan on disappearing from the whistle altogether. I hope to be able to contribute articles and columns from time to time. One of my secondary hobbies, (eating) should gain some input for the "Dinner in the Diner" column.

So, to swipe a phrase from our friends in the cooler business, thank you for your support.

Wally Rogers

Oshkosh **May 1-3, 1987**
Laona **July 18, 1987**
Waupaca **Oct 10, 1987**

Lake States Transportation News

LAKE STATES TRANSPORTATION SOLD

On April 3, 1987 the Soo Line Corp. announced the sale of their Lake States Transportation Division to the newly formed Wisconsin Central LTD. As this is written no further news has been released. That is not to say that the Lake States hasn't been making news.

LAKE STATES ASSIGNED POWER

9 SW 1200's
1207, 1209, 1211, 1213, 1216, 1212, 1220,
1221, 1222

37 GP-9's
400-405, 408, 410-412, 2401-2403,
2550-2553, 2555, 4225, 4227-4233

19 GP-30's
700, 701, 703-713, 715-719, 721

6 GP35's
723, 724, 726, 728, 730, 731

2 SD-39's
6240, 6241

73 Total Units

Fran Weiner/Richard O. Jungwirth

LAKE STATES TRAIN SHEET 2/27/87

The trains are still pretty much the same as this is written but you can see things have changed a lot from the Soo Line. 911/912 are now 11/12; 411/412 are now 21/22, this was due to mixups on the radio when both 911 & 411 would be near Neenah and the first digit would be cut off due to radio noise etc.

Note the various yards, these would be destinations for E/B (even#) and yard of origin for W/B (odd#). with the sale of most of Bensonville Yard, only the East end is in use; therefore most trains start/end in other yards in Chicago.....Roger Haback/RQJ

3	IHB/Clearing	New	Daily	Ex Tue
4		New	Daily	Ex Mon
6			Daily	Ex Sat
7	Schiller Park		Daily	Ex Sun
11	Bensonville	911	Daily	
12		912	Daily	
17	IHB/Clearing		Daily	
18	BRC		Daily	
19		245	Daily	Ex Sat
20		244	Daily	Ex Sat
21		411	M-W-F	
22		412	M-W-F	
218	Sprint		Daily	Ex S&S
219	Sprint		Daily	Ex S&S

Scheduled Departures

May 1-2-3	Midwest Region Spring Meet-Oshkosh, WI
June 27	NMRA Day-Illinois Railway Museum
July 18	WLD rides the Northwoods 400
July 28-Aug 2	Full Steam to Eugene-NMRA National Meet
Oct 10	WLD Fall Meet-Waupaca, WI
Nov 21	MWR Fall Meet-Willmette, IL

Bring a Friend

Model Railroading is Fun

EngineHouse Services LLC

Wisconsin's Full Service Train Shop

Repair Work
How-to-do Clinics
Digitrax & Soundtraxx DCC Products
Custom Painting / Building
Decoder Installations

Let Us Help You Enjoy the World's Greatest Hobby

2737 N. Packerland Dr.
Green Bay, WI 54303
Phone: 920-490-4839
Fax: 920-490-4859

www.enginehouseservices.com
sales@enginehouseservices.com

World's Greatest Hobby Supporter



Mullet River Railway Hobby Shop

414 E. Mill Street
Plymouth, WI 53073
Phone: (920) 893-9552
Fax: (920) 893-4400

E-mail: Cal Krasonya: kcalvin@wi.rr.com
Jerry Thompson: mrsrwy@wi.rr.com

Hours: Monday and Wednesday Evenings
7:00 p.m. to 9:00 p.m. (or by appointment)

Contact us for your model railroad needs. We carry all model railroad lines and ship orders world wide.

"We're BIG on small details."



The Whistle at Fifty: 1987

Dinner in the Diner! Including perennial and timeless grumbling about CNW service. I don't remember the National Railroad Museum still calling itself Rail America this far into the 80's, but look at the Russ Porter ad!

🍷 DINNER IN THE DINER 🍷

YES! We have no Bananas

By that I mean that our esteemed Super has given up his rail-motif oriented Liquid/Surprise diet until after our Regional Meet. Perhaps all the well for his life-expectancy, but it's the pits for the ole Whistle Editor.

However the ever resourceful C&NW has come to my rescue again. Since I have no article on rail-motif dining I must relate how they do it on the prototype. Note this would be a neat little action to keep the shippers happy on your own railroad. The following information comes courtesy of ██████████ of Oshkosh.

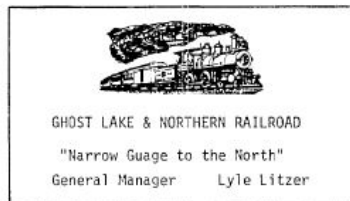
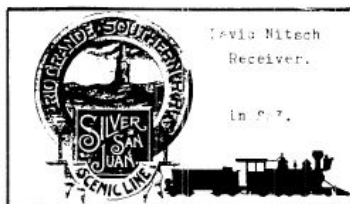
It seems that there have been some grumbings from a valley paper mill on the quality of service from the C&NW. If you were with IBM or suchlike the answer would be to send a horde of bright young MBA's up there to ease thier fears and polish the old Corporate image.

But not my beloved Northwestern! No these guys must be caught in a time warp. They do things the old-fashioned way.....they bribe them with goodies!

On Wednesday Nov. 12th FDGBA arrived in Oshkosh with the following just behind the locomotives:

Power Car	Oak Creek	490
Pullman	Lake Michigan	410
Full Dome	Powder River	421
Diner	Cedar River	450

On board were the complete staff, these cars were set out in Appleton and then taken to Kaukauna where the valued C&NW customers got their chance for a real Dinner in the Diner.
avvk



For information call: 231-7645

50th Anniv. 1936-1986



OSHKOSH MODEL RAILROAD CLUB
530 N. MAIN ST. OSHKOSH

Open Thursdays- 7:00 p.m.
Tuesdays- 7:00 p.m. Sept.- May

ALL SCALES

VISITORS WELCOME
Established 1936

Rail America on the Move

A very successful fund drive which raised \$1,200,000.00 and has it's sights set on \$1.5 Million a new spirit of progress has been confirmed by the ability to bring ideas into completed actions.

With the hiring it's first professional director, Dr. Jerry Musich the leadership which is critical in such a undertaking has been assured. The goals of the Museum have been set at Preservation, Restoration, Education and Expansion.

I've received a card from the museum announcing the moving of 8 steam locomotives to new track, "track laid out to resemble that of a roundhouse". I've been unable to get up there to see for myself but the moving of the UP Big Boy was on TV and just the start.

To further these goals positive steps have been also taken, perhaps foremost of these is Communication. A Quarterly newsletter has been started to bring the news to the people and the media. A membership plan has been initiated which will bring in funds and foster the bond with the rail enthusiast. Also an expanded giftshop with over 300 titles in it's new mail order book department.

For more information contact:
Rail America,
The National Railroad Museum
Box 28171
2285 S. Broadway
Green Bay, WI 54304-0171



PINE VALLEY RAILROAD
C. BLAHNIK, Chief Engineer


WHISTLE ADVERTISING

THE KEY TO YOUR RAILROADS FUTURE
ACT NOW

AD MANAGER - BOX 2605
OSHKOSH, WI 54903-2605


Russ Porter

RAILROAD, STEAMSHIP ARTIST & HISTORIAN

Lake Shore Choo Choo
River Plaza, 3rd Floor North End Drug
Tues., Wed. & Thurs. evening 6:30 to 7:30
Toy trains and model railroad supplies

A. D. Nelson - Proprietor
D. A. Burkart - General Manager

NTRAK  NMRA

JOHN W. RUPEL
CHIEF ENGINEER

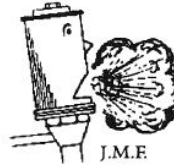
MAIN OFFICES
TOMAHAWK, WI



On June 23, 1913, the South Oshkosh depot was inspected and photographed by ICC examiner J. H. Kendall. SLHTS Archives.

The Whistle at Fifty: 1997

Here we go, the '90s... most of us around and involved right now can remember twenty years back, right? The Packers returned to glory in Super Bowl XXXI in January, *Titanic* was released in December, and in between we lost Princess Di and Mother Teresa. On the modeling front, Madison was hosting the National Convention! Obviously the Whistle upgraded to a full-page newsletter by this time, with Mary Eiden at the helm of the now fully computer-generated publication. On the board we had two Rogers and two Kozlovskys!



FROM THE EDITOR

I hope that everyone had a nice Easter. Now it is time to look ahead to the Spring Meet which is being held in Marinette. You should have received a pre-registration form in the last issue of *The Whistle*. You should have filled it out and sent it in by now especially if you are planning to attend the banquet.

Candidate profiles and ballots are enclosed. Please look over the profiles, vote, and return the ballots by the end of April to Sue Kozlovsky, P.O. Box 2501, Appleton, Wisconsin 54913. If we have the results in time for the Spring Meet, we will announce them at the banquet. If not, the results will be published in the next of *The Whistle*.

I received some e-mail shortly after the Winter 1996 issue came out. It was a message congratulating us on an outstanding division publication and this person thanked us for having him on our list of people who receive a copy of *The Whistle*. That person was Bob Charles, president of the NMRA. Let me just say thank you to all of you who have a hand in putting together our newsletter, from the people who send the articles, to the publishers and the people who send it out in the mail. THANK YOU!!!! Also, thank you to Mr. Charles for the kind words.

Well, that's about all I have for now. I hope to see as many of you as possible at the meet! REMEMBER TO PRE-REGISTER!

THE ROAD WITH ANDREW

By: Roger Hildebrandt

Early in December, a rumor surfaced in the Hildebrandt household that Thomas the Tank Engine and Sir Topham Hatt would be in Green Bay on December 29. These two individuals are on an almost equal status as Santa Claus with Andrew. So with this in mind, a trip was planned to go to the National Railroad Museum in Green Bay. The night before Andrew went to bed with visions of Thomas and Sir Topham Hatt dancing in his head. In the morning, there arose such a clatter, that Andrew sprang from his bed to see what was the matter. Just grandpa in the kitchen making pancake batter. After a light breakfast, we headed for Green Bay in our

four-cylinder sleigh. (We used grandma's car. She drives a Ford, but we don't hold that against her.)

After we arrived at the museum to our surprise, we discovered that the regular train was also running today. A Milwaukee Road F.M. was pulling two coaches and a dinner car in which lunch would also be served. Not being one to miss out on a lunch, we headed right for the diner car. A hot chocolate and a frankfurter really hit the spot on this frosty Sunday morning.

The car attendant passed on to us all kinds of information about the diner and Thomas the Tank Engine. Apparently, the diner car can be reserved for diners such as weddings and the like. After you board at the depot, the car is parked on the bridge overlooking the Fox River where dinner is all day, for a fee of course.

As for Thomas, the museum has acquired the rights to construct a 12-inch to the foot life-size replica. The museum runs him on the grounds several times a year. Today, he was in a heated tent with Sir Topham Hatt. You could have your picture taken with him and get his autograph. I don't know who enjoyed it more, Andrew, or me just standing back and watching Andrew's face as he touched Thomas and talked with Sir Topham Hatt. Oh to be four years old again.

In the heated building that house the indoor displays, there were games for kids, several Thomas layouts to play with, face painting, and bowling with pins that look like little Sir Topham Hatts. Of course, a trip to the hobby shops would be in order before returning to Waupaca. To my surprise, Andrew picked out a HO flat car with a semi tractor and trailer on it painted up for Desert Storm. Grandpa's influence is starting to take hold (I hope).

In closing, Andrew and I hope you all had as good a holiday as we did, with many more to come. So see, Mary, there really is a Thomas the Tank and Sir Topham Hatt. Just ask Andrew.

Volume 30 No. 1

Spring 1997

Quarterly Newsletter

SPRING 1997 MEET MARINETTE, WISCONSIN APRIL 26, 1997

The Wisconsin and Michigan Model Railroad Club is hosting the 1997 Spring WinnebagoLand Division Meet in Marinette, Wisconsin at the Marinette Catholic Central High School, 1200 Main Street, Marinette, Wisconsin on April 26, 1997. The price is \$17.00 for the Meet and Banquet and Meet Only Tickets are \$5.00. Pre-registration is required to attend the banquet. You must return the form enclosed in this issue, along with payment, to Dave Rickaby by no later than April 19, 1997. The following is the events that will be taken place at the meet:

Slide Shows:

Andre Pichette - Great Lakes Freighters

Joe Seidl - Cahon Pass, Tehachapi Loop, British Columbia, and Power River Basin

Bob Gallegos - Pacific Northwest

Clinics:

Chic Hartert - Hot Foam Scenery

Jim Hediger - Double Deck Layout Construction Rebuilding of his OH Southern Railroad

Roger Hildebrandt - Operations and Car Forwarding On His EH&AC Railroad

Home Layouts - Close To a Dozen Including:

Dave Rickaby's WI & MI Railroad, Featured in *MR*.

Joe Seidl's Thunder Lake and Western

Chic Harter's Sn3 Layout - Full Sound System

Andre Pichette's Double-Deck MR&SG Railroad

Dan Chinnery's BN Railroad

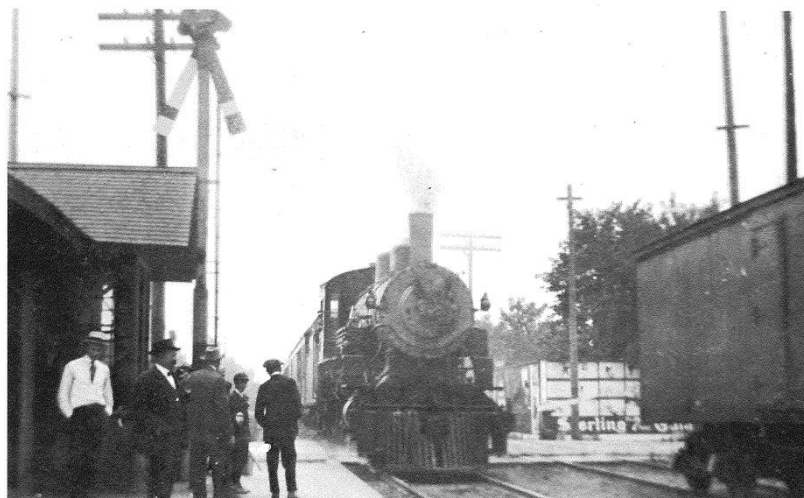
Just to name a few, plus introducing Bill Schwanz's 54-foot by 37-foot HO Steam Era Layout.

Banquet:

The Brass Lantern, N4178 Highway 180, Marinette, Wisconsin

Guest Speaker: Jim Hediger, Senior Editor of *Model Railroad Magazine*. Tour of European Model Railroad Manufacturers.

FOR MORE DETAILS AND TO PRE-REGISTER, SEE THE PRE-REGISTRATION FORM INCLUDED IN THIS ISSUE. PLEASE REMEMBER TO PRE-REGISTER!!!!



In this 1914 view, a northbound passenger train is arriving at the South Oshkosh depot. The WC refrigerator car on the siding was using to store fresh produce from the express car. Later it was switched to the freight house by the local switch crew. Fred W. King, photograph, David Kingsbaker collection. SLHTS Achieves.

The Whistle at Fifty: 1997

Probably the biggest thing about the mid-90's, though maybe it wasn't realized at the time how big it really would be, was the rise of the internet and world wide web from the government's ARPANET project. Right around 1995 was when business and consumer use really took off, and as you can see below, the WLD was embracing it as early as 1997, including a website.

GETTING ONLINE

By Jerry Nichols

While e-mail and the web pages of the Internet are the primary interests of most people who are on line, there are other interesting things you can do once you have logged on.

Imagine that everywhere you went there were bulletin boards, and each bulletin board was devoted to a different topic. Every day people from around the world would come by to read and post messages. Well, that's pretty much how newsgroups work.

Newsgroups are also similar to e-mail, except that instead of sending a message to one or two people, messages are posted on electronic bulletin boards where anyone who wants can read them. Most Internet Service Providers include access to the newsgroups but not all ISP's carry all of the newsgroups. With nearly 6,000 newsgroups on the Internet, you should be able to find one or more that interests you.

Because so many messages are posted to so many newsgroups every day they are only kept on the servers for a limited amount of time. This might be as little as a couple of days or as long as a month. Some newsgroups are moderated and messages are only posted after the moderator has read and approved them. However, most newsgroups are not moderated and just about anything can, and do, get posted.

Most browsers have newsreaders built in and there should be a button or command in one of the drop-down menus. On Netscape Navigator it is under WINDOWS on the menu bar. If your ISP does provide access to newsgroups, a new window should open and it will start listing the newsgroups. The first time you do this it may take a very long time to receive all of the groups. You can stop the process by clicking the STOP button on your browser. In a minute I'll discuss a way to locate just those newsgroups you might be interested in.

Next select one of the newsgroups and the messages it carries will be downloaded. Again, this may take a while. Some newsgroups have hundreds of messages posted every day! Now just click on a message to read it.

You can now send a reply to the message author, post it for all to see, or do both.

Please, do not just jump in and start posting messages! That's a very good way to get flamed or e-mail bombed! Proper netiquette is to read the messages for several days to get an idea of the subjects being discussed before posting your own messages. And look for those FAQ's (Frequently Asked Questions)!

Once you have found a newsgroup you'd like to come back to regularly, you just subscribe to it. You will also have an options menu that lets you select whether you see all the newsgroups or only those you have subscribed to. Refer to your browser's help files or user's manual on how to do this.

If you just want to see what's available without going through all of the above, or want to search for specific newsgroups, check out <http://www.dejanews.com>. This web site archives all newsgroup messages, lets you read and respond to messages, and has a search engine to help you find just what you're looking for. You can also use Dejanews if your ISP does not carry newsgroups or your browser doesn't have a newsreader.

Participating in a newsgroup can be very interesting and informative. Posting a question can often get you more than one answer within 24 hours and the ideas and comments expressed by others may help you decide on a better product or way to do something. I hope you'll give it a try.

This will be my last Getting On-line article. I hope that I have helped those of you with internet access enjoy the hobby of model railroading a bit more by providing new ways to find information on your favorite prototype using your computer and the World Wide Web.

Sheboygan Society Of Scale Model Railroad Engineers LTD

Meets 1st and 3rd Tuesday of the Month at RR Lodge 1001 N. 10th St Sheboygan, WI 53081



WLD CLUB/OTHER MWR DIVISIONS' NEWS

Calumet Division, MWR, NMRA

This group meets once a month at the Twin Towers Orland Park Historical Building on Sundays from 1 p.m. to 4 p.m. They have their own modular layout.

They will be hosting the 1997 Fall Midwest Region meet this year (Tracks Around The Lake), October 10 to October 12, 1997, at the Best Western Convention Center in Homewood Illinois.

The Joiner Bar

Central Wisconsin Model Railroaders, Ltd.

Congratulations to Carl Whitaker who was named member of the year! Carl received this honor at the annual Christmas Party for his many years of service to the club and restoration work on the depot. Also a note, that Carl has served on the Winnebago Board of Directors for sometime as well. Thanks Carl!

Work on upgrade the modules will begin. The HO corner modules will be rebuilt. The current plan is to have them ready for Strawberry Festival. The N Scalers are going to do a major rebuild on the corners as well; in addition, they will be doing other major reconstruction of other areas of the layout.

As our Webmaster, Jerry Nichols reported in this issue, the CWMR is now on-line with their own homepage. You can visit the site at <http://www.coredcs.com/danderso/>.

The Laker

Dupage Division, MWR, NMRA

The Dupage Division holds their meets once a month at Benedictine University in Lisle, Illinois.

They will be holding their annual General Meeting in April. The recently hosted the *Rails o' Plenty* 1996 Fall Midwest Region Convention. There were roughly 180 attendees for the convention.

The next convention they will be hosting will be the Fall 1999 MWR Convention.

The Crossbuck

Illinois Valley Division (IDV)

This group holds various meets throughout the year at various locations. Their next meet will be May 18 in Utica.

The IDV will be hosting the 1998 Fall MWR Convention, September 18-20, 1998, at the Allen Building located in Bureau County Fairgrounds, Princeton, Illinois.

I.V.D. Timetable

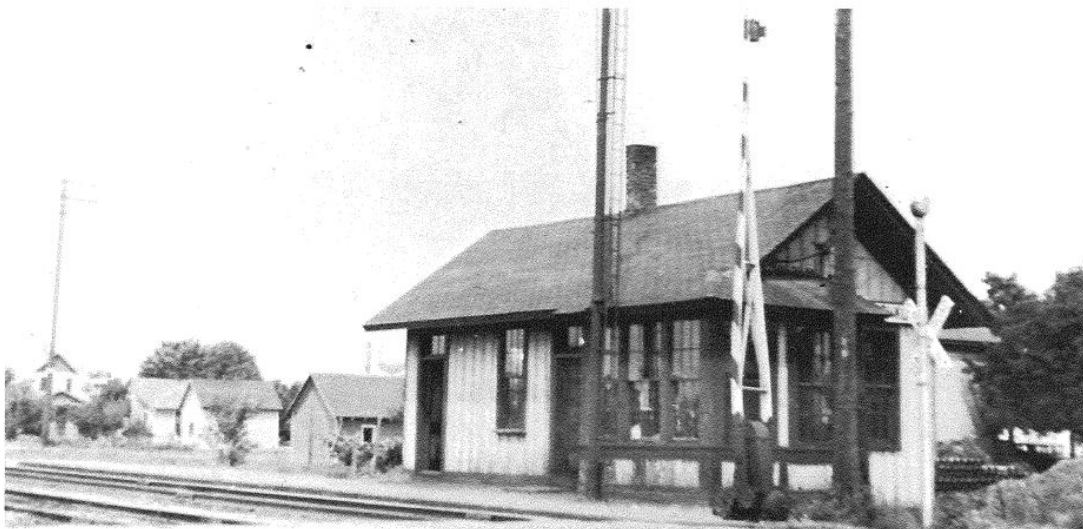
Paper Valley Model Railroad Club

The club now has 21 members. Their bus trip to Trainfest was a success and they will be doing another trip again in November 1997.

They recently had their annual Swapmeet, which was held on March 1 at the Sabre Lanes. (Editor's note: I apologize for the incorrect date that was listed in the previous issue.)

An open house for NMRA members is in the works and the group may try to work this in with their club open house in November. If not, they may have a special day for this in October.

They will be repairing the modular layout before the Waupaca Strawberry Festival this summer.



In the early 1920's, the appearance of the South Oshkosh depot was modified by the removal of the telegraph's by and moving the office to the 9th Street side. A large bay was built at the corner so the agent could more easily control the air-operated crossing gates. Wes L. Foshay collection, SLHTS Archives.

The Whistle at Fifty: 1997

Sorry if you've had to zoom in to read these! Take a look at what our local clubs and other divisions were doing in 1997. I know too that the Green Bay club was almost halfway through its residency at the National Railroad Museum; in fact I believe I was an officer at the time!

WLD CLUB/OTHER MWR DIVISIONS' NEWS CONTINUED

Paper Valley Model Railroad (Cont.)

They continue to do maintenance on the building. In January, they had their layout video taped by the local cable channel, and in February, WEMI Kids Live Broadcast was scheduled from 8:30 to 9 a.m.

The club now has an Internet site. Bill Moede is the Webmaster. Look for it at <http://www.geocities.com/heartland/9045/>.

*Minutes from Quarterly Meeting
Provided by Craig Volkman*

Plymouth Model Railroad Club

Congratulations to John Kline who was selected as the Plymouth Model Railroad Club Model Railroader of the Year. This award is presented to an individual who goes above and beyond the average, to promote the hobby. John has been extremely active with their remodeling project, in preparation of their layout room. Again, congratulations, John!

They are very busy working on their layout project. They also recently bid on a 5-ton locomotive and a 20-foot flat car and on December 19 received a letter stating they were the proud owner of a real "Plymouth" locomotive and freight car. They have arranged to have it placed on display at the Depot Restaurant in Plymouth.

The group is also hosting the 1998 Fall WLD Meet on October 3, 1998.

The Smashboard

The Rhinelander Railroad Association

This group is continually working on their layout at the depot. They recently added some new members to their group, including their first female member.

The Warrant

Rock River Valley Division, MWR, NMRA

The following are upcoming dates of events being held by the Rock River Valley Division (RRVD):

April 6 - RRVD meet at the Harlem Community Center (HCC).

May 4 - Joint meet with the South Central Wisconsin Division (SCWD).

June 1 - RRVD rail junket

September 7 - RRVD meet at HCC.

October 5 - RRVD meet at HCC.

November 1 & 2 - Train show & RRVD meet at Midway Village.

December 7 - RRVD meet at HCC.

This includes just some of the group's many activities.

Flinzie

Tri-City Railroaders' Association

The membership voted to change their meetings from the second and fourth Sundays to the second Sunday and fourth Saturday. The second Sunday of the month will be their business meeting and is at 7 p.m. The Saturday meeting will be designated as operations/work meetings as they will be held at 10 a.m.

TCRA Newsletter.

U.P. Shortlines Model Railroad Club

This group will be hosting the 1997 Fall WLD Meet in October at the Holiday Inn in Marquette, Michigan. This will be a two-day meet.

The Orderboard

WLD CLUB/OTHER MWR DIVISIONS' NEWS CONTINUED

Waupaca Area Model Railroaders, Ltd.

This group attended the Winona Train Show and the LaCrosse Show. Some of their members are busy getting their home layouts ready for the National Convention, as they will be featured on home layout tours.

They will again be having their annual train show in June in conjunction with Strawberry Festival.

Chatter From The Crummy

Wisconsin & Michigan Model Railroad Club

The group is hosting the upcoming Spring Meet. All of the details are in this issue. Please pre-register to make things easier for them!

The group recently attended the LaCrosse show, and has several other shows they are attending this year, including the National Convention in July.

Congratulations to Tom Cox who will have his home layout featured in the May issue of *Model Railroader*. In addition, congratulations to the club on taking second place for operating layouts at the 1997 Madison Model Rail Show in February.

The De-Railer

Wisconsin Valley Model Railroad Club

The Wisconsin Valley Model Railroad Club has been in operation since 1960 and is housed in the basement of the Marathon County Historical Museum, 403 McIndoe Street, Wausau.

The club meets each Thursday night from about 7:30 p.m. to 10 p.m. Operating sessions are held the third Thursday of the month for club members and guests. They operate for the public on the first and third Sundays of the month from 1:30 p.m. to 4 p.m., even on "Packer Sundays" (radio waves do make it to the basement). The club

publishes an irregular and sometimes irreverent newsletter, "The SmokeStack."

The railroad is set scenically and historically in the Central Wisconsin area. The era modeled is roughly the late 1940's to the early 1950's (steam to diesel transition). The WVR interchanges traffic with the Soo Line, The Milwaukee Road, and Chicago and Northwestern. The basic scenery and structures are in place, with modifications coming as the spirit and motivation hits the membership. Recently, a forested area on the layout "was logged" by four-legged Paul Bunyans. Their activity was severely curtailed by enterprising hunters.

Planning is now underway for the WVR to host the Division Meet in April 1998. They hope to settle on a date before the August issue of *The Whistle* is published.

At the annual meeting in January, the following were elected officers of the WVR:

President: Glen Kwarciany
Treasurer: James Wadinski
Secretary: Dan Hoenecke

Information was submitted by Ron Beckman, Clerk

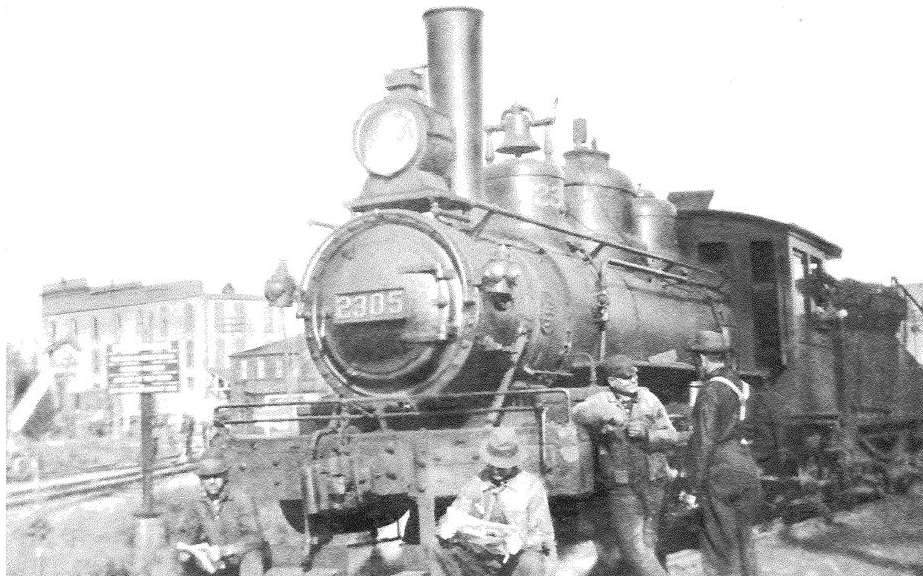
WISE Division

Meets are held once a month at various locations. They will undoubtedly be hard at work preparing another Trainfest to be held in November.

With the National Convention so close to them, they will be in charge of running the National Auction.

WISE Express

THANK YOU TO ALL OF THE CLUBS/DIVISIONS WHO SENT IN THEIR NEWSLETTERS/MINUTES TO ME. WE ENCOURAGE CLUBS (AND DIVISIONS) TO KEEP US INFORMED AS TO WHAT THEY ARE DOING SO WE CAN REPORT IT TO THE WLD MEMBERS. AGAIN, THANK YOU!



The switch crew does not seem too busy as they rest with their locomotive near the freight house. The main line heading north is in the background. Taken in 1914 by Fred W. King, David Kingsbaker collection, SLHTS Archives.

Gehry to Design Architecture & Model RR Museum

By Andrew Chow, reprinted from "The New York Times"

Frank Gehry has signed on to design a new museum in North Adams, Mass., that will feature models of trains running around famous buildings from the last 150 years — including six of his own.



who is spearheading the project, said in a phone interview.

Mr. Krens, 70, and Mr. Gehry, 88, have collaborated many times before, including on the Guggenheim Museum Bilbao and the long-gestating Guggenheim Abu Dhabi. When Mr. Krens originally started developing Mass MoCA in the 1980s, he called Mr. Gehry to take a look at the space.

“When I first went there for the first time, I had this vision of a kind of a people’s Florence,” Mr. Gehry said of North Adams in a phone interview. “These empty buildings could become galleries for specific artists, and sculptures could be placed around town.”

Mr. Gehry confessed to not being a train enthusiast: “Model railroads are not something I was infatuated with as a child.

The proposed project, called the Extreme Model Railroad and Contemporary Architecture Museum, will be a few blocks away from Mass MoCA, which recently completed its third phase of expansion, with large-scale exhibits by

Jenny Holzer, Laurie Anderson and Robert Rauschenberg. It will cost an estimated \$65 million and cover 83,000 square feet.

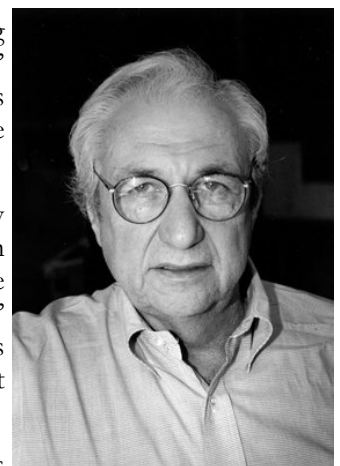
The whole exhibit will be on one scale, with the roof of the building at least 40 feet high to allow room for skyscrapers; the Empire State Building replica, for example, will stand 35 feet tall. The work of 71 prominent architects, including Frank Lloyd Wright and Louis Sullivan, from around the world will be featured.

“We’re creating it with historical obsession and mesmerizing detail,” Thomas Krens, the former Guggenheim Museum director and a Mass MoCA founder

We were poor, and we didn’t have the money to buy that stuff,” he said. He has created a preliminary model of the building, but has not developed the design yet. “I don’t know what a model railroad museum should look like.

It probably just needs to be a big warehouse, which I’m O.K. with,” he said, adding that he supposes Mr. Krens “wants something a little more visually active.”

Mr. Gehry was unaware that a few of his own buildings had been chosen by Mr. Krens for the museum. “He didn’t tell me that!” he said. “I don’t know which ones he’s picking, but I expect he’ll do it all justice.”



The city of North Adams has submitted an application for a \$5.4 million grant from MassWorks, the state government infrastructure program, and the museum has so far raised \$2.5 million from private contributions and state grants.

Mr. Krens expects that the museum could double the number of visitors that its neighbor Mass MoCA receives, based on an economic analysis, and in the process he hopes to turn North Adams, not far from the Clark Art Institute and the Norman Rockwell Museum, into an overnight tourist destination. He estimates that the museum will open by 2020, and is also planning future development for the area — including a bridge, to be designed by Mr. Gehry, and a luxury hotel.



(Left: Guggenheim Bilbao; Above: Frank Gehry)

Team Track

Division Officers

John Leow	Superintendent
Mike Wadinski	Asst. Superintendent
Scott Payne	Paymaster
Vern Ehlke	Chief Clerk
John Leow	Division Director

Board of Directors

Wally Rogers	thru 04/18
Roger Wurtzel	thru 04/18
Joe Lallensack	thru 05/18
Dave Nitsch	thru 05/18
Todd Bushmaker	thru 06/18
Dave Allen	thru 09/18
Mary Eiden	thru 09/19
Mike Eiden	thru 03/19
Phil Herman	thru 11/19
Chris Heili	thru 01/20

Committee Chairs

Todd Bushmaker	Whistle Editor, Ads, Circulation, Subscriptions
Marv Preussler	AP Chairman
Wally Rogers	Membership Chairman
Phil Herman	Clinic Chairman
James C. Cruthers	501(c)3 Committee Chairman
Lynn Jasch	Convention Registrar
Vacant	Convention Co-Chairman
Vacant	Convention Co-Chairman
Vacant	Company Store Chairman
Scott Payne	Operating Session Coordinator
David Allen	Model Contest Chairman
Joe Lallensack	Photo Contest Chairman
Michael Eiden	Webmaster
Rich Hopfensperger	Hobby Shop/Model Club Liaison
Vacant	Scout Coordinator

Please note the vacant positions and let the Superintendent know of any possible interested parties!



www.wld-nmra.com

Facebook:

“WLD Division, NMRA”

On the Ready Track

- Oct 7** WLD Fall Meet
Sheboygan Senior Activity Center
- Nov 4** WLD Fall Operation Session
Joel Weeks GNR layout
Appleton (*see info in summer issue*)
- Nov 11-12** Trainfest
State Fair Park, Milwaukee
www.trainfest.com
- Nov 24-25** Paper Valley Model RR Club
Open House
Kaukauna (*see flyer this issue*)
- Feb 3, 2018** Arctic Run Model RR Show
Stevens Point
(*see flyer this issue*)
- April 13-15, 2018** “Capitol 400” MWR
Regional Convention
Madison (*see info this issue*)

Introducing the best deal in model railroading.

Join the NMRA for 6 months for just \$9.95!

- Have easy access to one of the world's largest railroad libraries...which includes over 100,000 prototype photos, 6,000 books, and over 50,000 modeling, prototype and historical society magazines
- Experience the fellowship and fun of getting modeling help and discussing the hobby with other members in your area
- Receive reduced rates on special insurance for your layout or collection
- Get admission to local model railroad meetings and events
- Receive 6 monthly issues of *Scale Rails* magazine
- Have access to standards information and data sheets
- Be a part of programs like “Modeling With The Masters,” Pike Registry, Estate Counseling, contests, clinics, the Achievement Program and more!

Visit www.nmra.org to see what you're missing!

Sign me up!

Fill out this form and include your payment.

U.S.: Send \$9.95 (U.S.) to NMRA-Rail Pass Membership, 4121 Cromwell Road, Chattanooga, TN 37421-2119.

Canada: Send \$9.95 (Cdn) to NMRA-Canadian Rail Pass Membership, 69 Schroder Cres., Guelph, ON N1E 7B4, Canada.

Name _____

Address _____

City/State/Zip _____

Phone (____) _____

Email _____

Check Credit card

Credit Card # _____

Credit Card Exp. _____

Signature _____

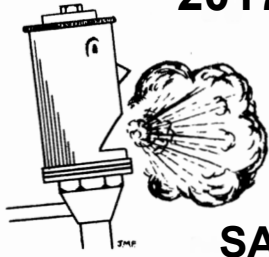
Also available in Canada!



So much bang. So few bucks.

*Rail Pass offer is for new members and those who have not been NMRA members for two years or more. Individuals can join at Rail Pass rates only once; membership renewal will be at the regular membership rate. Rail Pass members can attend conventions and participate in contests, but cannot vote or hold office and will not receive a New Member Pak.

2017 NMRA WinnebagoLand Division Fall Meet



**"AN ENTIRE DAY OF MODEL AND
PROTOTYPE RAILROADS!"**

ADDITIONAL FORMS AND INFO COMING AT OUR WEBSITE
WWW.WLD-NMRA.COM



SATURDAY October 7, 2017- Sheboygan, WI

LOCATION:

**Sheboygan Senior Activity Center
428 Wisconsin Ave.
Sheboygan, WI**

An entire day of learning and camaraderie is what you'll find at this year's WLD NMRA Fall Meet. *Clinics* on topics from the prototype railroads to modeling techniques. *Sales tables* from vendors. *Historical society* displays from the C&NW, GB&W, Milwaukee Road, and Soo Line. Bring YOUR models and photos along to share with your fellow model railroaders and historians or be judged for the NMRA Achievement Program. *Layout Tours* featuring local modelers as well!

CLINICIANS and PRESENTERS:

- Cody Grivno (*Model Railroader*)- Railroads of Crookston, MN.
- Rich Hanke- Cleveland, WI Revisited- A Place To Model.
- Fred Firkus- Modeling M-O-W trucks and equipment.
- James Rindt- Scratchbuilding structures for your railroad.
- Scott Peterson- Railroads of Marathon county.
- Pete Fetterer- The Railroads of Sheboygan county.
- Fred Firkus- The Don Manlick slide collection.
- Gregg Condon, MMR- Layout Construction Techniques.

(Clinicians and presenters still being added-subject to change)

SCHEDULE OF EVENTS:

- Registration: 8:00-11:00
- Swap Tables: 8:00-1:00
- Model and Photo Contests 8:00-1:00
- Clinics: 8:30-1:00
(Lunch available on site- not included with registration)
- Layout Tours: 1:00-4:30
("Happy Hour" on your own 4:30-5:30. Sorry, no alcohol sales or consumption permitted at the Senior Center.)
- Banquet: 5:30-?
Guest Speaker: Floyd Schmidt, author and Wisconsin rail authority.

Pre-Registration Form (REQUIRED for BANQUET.) Must be received by 9-23-17

NAME _____ ADDRESS _____

CITY _____ ST. _____ ZIP _____ e-mail _____

Number of NMRA members attending @ (Meet only) x \$10.00 _____ NMRA # _____

Number of Non-NMRA members attending @ (Meet Only) x \$15.00 _____

Number of NMRA members attending Meet and Banquet x \$26.00 _____ NMRA # _____

Number of Non-NMRA members attending Meet and Banquet x \$31.00 _____

Number of Swap Tables needed? @ \$5.00 ea. = _____ Number of Banquet Only @ \$16.00 _____

Total Enclosed = _____

RETURN THIS FORM AND PAYMENT TO:

**PLEASE MAKE CHECKS PAYABLE TO:
WINNEBAGOLAND DIVISION**

**Lynn Jasch, WLD Registrar
1850 Adler Way
Green Bay, WI. 54303**

GENERAL PUBLIC WELCOME TO ATTEND - \$15.00 ADMISSION AT THE DOOR

PAPER VALLEY MODEL RAILROAD CLUB

PAPER VALLEY MODEL



OPEN HOUSE 2017

FRIDAY NOV. 24th – 9 am till 5 pm

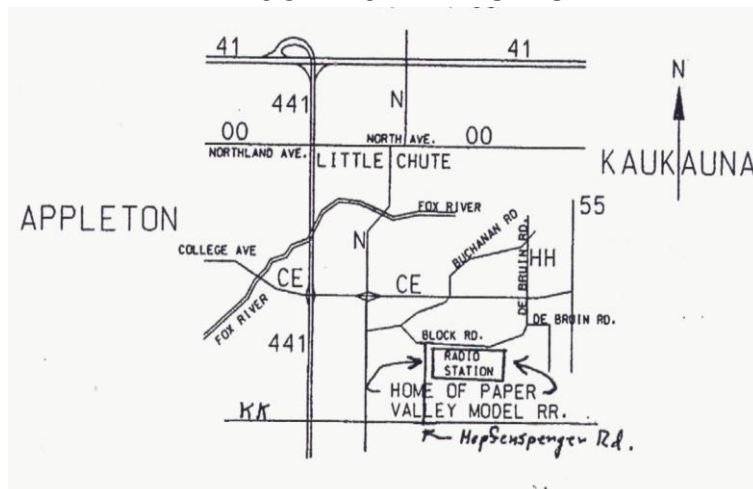
SATURDAY NOV. 25th – 9 am till 5 pm

And Holiday Open House

SATURDAY DECEMBER 30th – 9am till 5pm



W221 BLOCK ROAD KAUKAUNA WI



**The Paper Valley Model Railroad Club is a 501c(3) Non Profit Organization.
No Admission Required but Donations are Appreciated !
Call Paul at 920-475-2659 for more information.**



**21st Annual
Model Railroad Show and Sale
Arctic Run 2018
FEBRUARY 3 – 4, 2018**

**Stevens Point, Wisconsin
Holiday Inn – Convention Center Hotel**



**Admissions: \$4.00 Adults \$2.00 Ages 12-17
11 and under FREE**

Sponsored by Central Wisconsin Model Railroaders Ltd, a non-profit educational organization. Contact Paul Clasen for layout or vendor information at (715) 341-5253 or email Paul at designcentralwi@yahoo.com; or Don Anderson at (715) 340-8105 or email Don at crm114@tds.net.

Our proceeds, after expenses, support local non-profit organizations.



Sponsors: Spectra Print; Portage County Historical Society; Holiday Inn; Central Wisconsin Model Railroaders

**1001 Amber Avenue
Stevens Point, WI 54482**

**Saturday
Sunday**

**9 AM – 5 PM
10 AM – 3 PM**



*All Aboard for the Capitol 400
Midwest Region Convention.
April 13-15, 2018
Madison, WI*

- Operating Sessions Friday Afternoon and Evening
- Clinics Friday Evening and Saturday Morning and Afternoon Including:
The Photography of O. Winston Link
- Layout Tours Saturday Afternoon and Sunday
- Non-Rail Activities Including Project Linus
- Every Registration Includes the Banquet with Guest Speaker Tony Koester



Model Railroader Editor Tony Koester



Visit www.nmra-scwd.org for details.

Come Join The Fun!