

# THE WINNEBAGOLAND WHISTLE

The Official Quarterly Newsletter of the WinnebagoLand Division - MWR/NMRA



Volume 42 - No. 4

Winter 2009



---

---

## The End Of An Era...

---

---



## Our Last Printed *WinnebagoLand Whistle*.

### Inside This Issue...

**IMPORTANT SURVEY!**

Updates On The WLD

Operating Session and Fall Meet Wrap-up

A Journey Of Membership

The Joys Of Being Published

**The WinnebagoLand Whistle  
The Official Quarterly Newsletter  
Of The WinnebagoLand Division**

**Staff**

Mark Preussler.....Editor / Ad Manager  
2007 Lake Aire Dr., Sheboygan, WI. 53081  
(920) 451-9691 e-mail: [markshelly@excel.net](mailto:markshelly@excel.net)

Marvin Preussler..... Subscriptions Manager  
2519 Henry Street Sheboygan, WI 53081  
(920) 803-9668 e-mail: [mpreussler@milwpc.com](mailto:mpreussler@milwpc.com)

Universal Lithographers.....Publishers  
Marv Preussler, Print Agent

Marvin Preussler.....Circulation Mngr.  
2519 Henry St. Sheboygan, WI. 53081

**Subscriptions**

*The WinnebagoLand Whistle* is published quarterly (Spring, Summer, Fall, Winter) and is distributed free to all NMRA members residing in the WinnebagoLand Division. *The Whistle* is available by subscription at the rate of \$7.00 per year from the Subscription Manager.

**Advertising**

Advertising in *The Whistle* is available at the rate of \$10.00 per column inch. Special rates apply to standard size ads;

1" h x 3.5" = \$10.00 Directory Ad  
2" h x 3.5" = \$15.00 Business Card  
3" h x 3.5" = \$20.00 Medium Size  
4" h x 3.5" = \$25.00 Large Size

All proceeds from subscriptions and advertising in *The Whistle* are used to defray the cost of publication. The WinnebagoLand Division is a not-for-profit organization and exists to promote the hobby of model railroading. For ad specifications and order forms, contact the Advertising Manager at the address listed above.

**Editorial Contributions**

The Editor is pleased to receive contributions in the form of articles, news stories, clippings, letters, and photos. Submissions cannot be paid for except with thanks. The Editor reserves the right to edit all contributions to fit the space available

**Address Changes**

Moving? If so, contact the Subscription Manager with your new address so as not to miss an issue.

**Policy On Inserts**

*The WinnebagoLand Whistle* staff will insert flyers for meets announcements, etc. for clubs, other divisions, and the Midwest Region. Send 320 copies of each insert along with a check made out to the **WinnebagoLand Division** in the amount of \$10.00 per insert, to the Advertising Manager.

**Back Issues**

Back issues of *The WinnebagoLand Whistle* are available from the Company Store Manager at the address listed on this page for \$2.00 each plus postage.

**WinnebagoLand Division Website**

For up-to-date information and news from the WLD, please visit our website: [www.wld-nmra.com](http://www.wld-nmra.com)

**Front Cover**

*Like the old caboos signaled the end of a train, so it also signals the end of our printed WinnebagoLand Whistle Newsletter. It was one of the best newsletters from any NMRA Division in the US. Sadly, cost and our printing situation has finally caught up to this printed perk of WLD NMRA membership. Our website will be the NEW HOME for our Whistle! Photo: SLHTS Archives.*

**WinnebagoLand Division  
Midwest Region  
National Model Railroad Association**

**Officers**

Mark Preussler (09-10)-----Superintendent  
2007 Lake Aire Dr. Sheboygan, WI 53081-8828  
(920) 451-9691 e-mail: [markshelly@excel.net](mailto:markshelly@excel.net)

Roger Wurtzel (09-10)-----Assistant Superintendent  
910 Chandler Ave. Plover, WI 54467-2269  
(715) 343-2776 e-mail: [rogini@charter.net](mailto:rogini@charter.net)

Lynn Jasch (09-10)-----Paymaster  
1850 Adler Way Green Bay, WI 54303-33032  
(920) 499-1632 e-mail: [djasch@new.rr.com](mailto:djasch@new.rr.com)

James Cruthers (09-10)-----Chief Clerk  
37 N. 6th St. Hilbert, WI 54129-0192  
(920) 462-0909 e-mail: [pioneer@new.rr.com](mailto:pioneer@new.rr.com)

**Chairmen**

Brian Cassidy-----Membership  
Dave Rickaby-----Clinics

Joe Lallensack -----Photo Contest  
3818 Mangin St., Manitowoc, WI. 54220-5456  
(920) 686-9824 e-mail: [jlallensack@lakefield.net](mailto:jlallensack@lakefield.net)

Chic Hartert-----Company Store Manager

Marvin Preussler-----Achievement Program  
2519 Henry St., Sheboygan, WI. 53081  
(920)803-9668 e-mail: [mpreussler@milwpc.com](mailto:mpreussler@milwpc.com)

David Allen-----Model Contest  
318 E. Prospect, Marquette, MI. 48955-3734  
(906) 228-9453 e-mail: [dallen@nmu.edu](mailto:dallen@nmu.edu)

Mary Eiden-----Web Master

Chic Hartert-----Conventions

**Board Of Directors**

Marvin Preussler (06-10)-----Board Member

Chic Hartert (09-13)-----Board Member  
330 Main St., Oconto, WI 54153-1933  
(920) 834-4300

Paul Hilmer (06-10)-----Board Member  
4711 N. Tanglewood Dr. Appleton, WI 54913-6854  
(920) 749-0004 e-mail: [Treelisa1@aol.com](mailto:Treelisa1@aol.com)

Dave Jasch (06-10)-----Board Member  
1850 Adler Way, Green Bay, WI 54303-8828  
(920) 680-7365 e-mail: [djasch@new.rr.com](mailto:djasch@new.rr.com)

Ron Weyher (06-10)-----Board Member  
49 N. 5th. Ave. Iron River, MI 49935-1709  
(906) 265-3265 e-mail: [kpsakebear@ironriver.tv](mailto:kpsakebear@ironriver.tv)

Joe Lallensack (08-12)-----Board Member

Mary Eiden (09-13)-----Board Member  
2229 Dixon St. Stevens Point, WI 54481-3842  
(715) 344-0885 e-mail: [maeiden@bigfoot.com](mailto:maeiden@bigfoot.com)

# Superintendent's Report...

By: Mark Preussler

Where did fall go? It seems like the WLD Fall Meet just wrapped up and now it's snowing! My thanks to Tim Victor and the Central Wisconsin Model Railroaders for helping to put on a small, but enjoyable meet. The layout tours and comraderie of the day certainly made it worth the trip over to Plover.

The WLD held a successful Operating Session in the Appleton area on November 7<sup>th</sup>. This is the type of activity we are hoping that more people will partake in and learn about operating from those who do it. My thanks to all who opened their layouts up for interested modelers in our area. I am going to solicit ideas from the BOD at our next meeting in hopes of expanding the Operating Session to several cities. As an example, I would like to see Manitowoc and Appleton both host operators on the same day. Another example would be Waupaca and Appleton or Marinette and Green Bay. That way, folks may not have as far to travel and I think we could expand this into a bigger event.

We have elections coming up again in the spring. If you are interested in running for office, please contact one of the BOD members listed on page 2. I am looking for candidates! The Board will officially form a committee in January looking for candidates as well. Now is the time to step up, especially with the NMRA National coming here (Milwaukee) in July. By getting involved, you will gain friends, help your fellow hobbyists, and work towards the betterment of the hobby. For proof, please see James Cruthers' story in this issue.

The WLD Membership and Promotions Committee has certainly been busy during the fall and a plan is being formulated to increase our involvement in the hobby. Although the group has some ideas we will roll out within the next 100 days, it will be **YOUR INPUT** which will drive us going forward. We want to spread the hobby and gain new NMRA members, but just as important is learning what **YOU**, the current member wants. **PLEASE** fill out and mail the questionnaire The WLD will purchase a gift certificate from one of our lead-

-ing hobby shops and it will be awarded during the Arctic Run train show to a lucky survey respondent. What a deal!!

As this is the last printed issue of The Winnebagoland Whistle, I again will remind you to visit our website for the latest information and updates. We will still need to do periodic mailings to all our members, so those without a computer in house will still be connected to the group, but the time is now to make our jump into the next phase of publishing.

Use your Christmas/holiday break to get some modeling done! I hope for even bigger things in 2010. Merry Christmas and a Happy New Year!

Mark





**Mullet River Railway**  
**Hobby Shop**

414 E. Mill Street  
Plymouth, WI 53073  
Phone: (920) 893-9552  
Fax: (920) 893-4400

E-mail: Cal Krasonya: kcalvin@wi.rr.com  
Jerry Thompson: mrsrwy@wi.rr.com

Hours: Monday and Wednesday Evenings  
7:00 p.m. to 9:00 p.m. (or by appointment)

Contact us for your model railroad needs. We carry  
all model railroad lines and ship orders world wide.

*"We're BIG on small details."*



## Where's MY Whistle?

One of the biggest changes to come to the WLD during my involvement has been the upgrading of this newsletter. We now are ready to take the next step by entering into the world of electronic publications with our web-based Winnebagoland Whistle.

With our new website up and running, keeping up to date will be easier than ever. As editor, I will also introduce color pictures and I am no longer limited to a set schedule for a full blown newsletter. Here's how the system is set up:

1. Visit our site at [www.wld-nmra.com](http://www.wld-nmra.com)
2. Click on The Whistle button on the left hand side of the screen.
3. A new page will open showing and listing all recent Winnebagoland Whistles. Simply click on the issue you want to read. The format is known as pdf. It will allow you to print pages as you wish.
4. Also note a new feature called "Whistle Toots" These are stories or newsworthy items in addition to the normal newsletter.

So, as you can see it's easy. Now, I have been asked by several members how they will receive information about shows and meetings. The WLD will send out mailings at several times during the year to those without a computer or e-mail access. This will revolve around our meets and election of officers. Please note it won't be a Whistle Newsletter, only a one or 2 page update on events and other items, like a ballot, if required. This mailing list will only work if we know who needs a hard copy so please contact me at my address in this issue. I ask for your patience in this regard.

It has been a great run for our Whistle in print. I doubt that in 20 years anyone will miss it in that form, but I will always feel that it was worth the effort and I thank everyone who has been involved in it through these 168 issues!

## WAUPACA AREA MODEL RAILROADERS, LTD.

Please Call:  
(715) 258-8218



EVERYONE WELCOME

NEW! The C&NW Steam Era In Wisconsin

## Merrill Publishing Associates

Photo CDs, Books, and Posters  
Historic Steam Locomotives  
Our products feature images from  
the collection of the late railroad  
photographer Roy Campbell with  
detailed identification by

Thomas E. Burg

C&NW - SOO - MILW RD - GB&W - CB&Q  
ROCK ISLAND - DAVENPORT LOCO. WORKS  
All CDs : \$20.00 + \$2.00 Shipping+Handling  
All Books: \$29.95 + \$3.95 Shipping + Handling

Merrill Publishing Associates

P.O. Box 51

Merrill, WI 54452

Or visit us at :

[merrillpublishingassociates.com](http://merrillpublishingassociates.com)

**WLD Spring Meet  
Watch For Details!  
May 15th 2010  
Menomonee, MI.**

## Promoting the Hobby...is the Division doing its Part?

By James C. Cruthers

It may help to have a bit of history as to how we got to where we are today before I actually get to the 'promoting' part of the story. Back in January of 2009 the WLD Board of Directors' (BOD) met at the Arctic Run Model Railroad show in Stevens Point. One of our topics focused on eliminating the hard copy of The Whistle largely due to the cost of printing and mailing and move to an electronic format. The fact that we do not have our 501(c)3 status, which negatively impacts our ability to hold raffles and raise money makes the hard copy of The Whistle a drain on resources. Aside from our usual business we also started to discuss the TitleTown Train Show in Green Bay and the role the Division plays at that show. Topics raised included the lack of a layout to raffle (again the 501(c)3 status) and 'promotion', specifically whether or not the WLD actively promotes the world's greatest hobby. We received feedback at that meeting that suggested the Division was not doing what it needed to do specific to promoting the hobby. When the Board met again in April we began to discuss the fact that individual memberships within the Division were down by 23% over the past three years. This included deceased members, lapsed members, and of course the lack of new members. It was at that meeting I made a motion that the BOD create a committee that would focus on membership and promotions and I volunteered to chair the committee. Marvin and Mark Preussler volunteered to work with me on the committee-turned-project.

As I began to think about the committee and have conversations with other members, I created a relatively brief questionnaire of a dozen or so questions and presented it to the Board for review at the June BOD meeting in Waupaca. My thinking was that in order to fully understand what challenges we were up against it was important to have as much data about the problem as possible and that included knowing if other divisions were experiencing similar problems, what they had done or were doing to resolve the problems, and simply learn from NMRA members across the country. I proposed that we determine the questions we wanted answers to and I would send it out via e-mail to as many divisions as possible and hope to receive a reasonable response on the survey. The BOD reviewed the questions, suggested additions or changes, and finalized the survey. All that was left was to make the recommended changes, create a letter of introduction as to why we were sending the survey, locate the e-mail address or contact for each Division, and send it out. By the end of July I had sent 109 e-mails to divisions all over the United States and Canada. Now I'm sure some of you are asking why I would send only 109 when there are actually about 155 divisions (U.S. and Canada) in the NMRA. The reason is that some divisions were listed as 'inactive' and I had trouble locating contact information for the others.

The results

In the past, I have been active in sending surveys through other organizations not to mention those related to my profession and receiving a 10-15% response rate, although pitiful from my perspective, was often considered pretty good. To my astonishment, the response rate I received from this mailing was a whopping 29%! I was thrilled. And it was clear that the majority of the individuals who responded were very thoughtful about their responses to the questions.

Of all the Divisions that responded, membership was all over the place. Some had significant increases in membership others remained fairly steady, while others experienced decreases just like the WLD. In terms of how Divisions attract new members I found that many placed flyers for NMRA-sponsored events, i.e., meetings, clinics, etc., in hobby shops while others manned a table at train shows to discuss the benefits of the NMRA, i.e., conventions, insurance, education, etc. Many of the Divisions hold regular meetings that range from several times per year to bi-monthly (every two months) to monthly.

Continued on Page 6...

Monthly seemed to be the most frequently that groups met although some Divisions held Board meetings once per month and then a general member meeting once per month that offered education or presentation. One Division that covers quite a large area meets monthly in a centralized location but will meet in the 'extreme' counties once per year. Some Divisions sell Rail Pass memberships to new modelers at NMRA Divisions sponsored events that are open to the public and at train shows. One Division has a membership table at the train shows that offers free trial subscriptions to their monthly newsletter and 50% subsidized NMRA memberships for new members who sign up at the show. They give a complimentary current copy of their newsletter and a copy of Scale Rails. Another division states that in keeping with their non-profit status they offer 'hands-on' clinics and occasionally include an operating session that teaches prototype operations. They hold a "Bring & Brag/Show & Tell" session at every meeting where members can show off some of their modeling efforts, etc., as well as routinely share 'tips and discoveries' that members have found. Some Divisions actively pursue past Division members who have allowed their membership to lapse or have purposively not renewed. If the person does not renew at least they have the opportunity to discover what prompted the person to leave the fold. Some Divisions offer 'member aid' to connect members struggling with some aspect of model railroading with other members who have had successes in that area as a trouble-shooting option. Other Divisions even pick up the cost of the Scale Rails for one year if people sign up for NMRA membership during the show 'through' the Division. Others list all new members in the upcoming issue of their newsletter.

Another great idea is the Piedmont Pilgrimage held each November through the Piedmont Division (South East Region) where Division members open up their layouts to the public. If you would like more information on this topic go to: [www.piedmont-div.org/pilgrimage/](http://www.piedmont-div.org/pilgrimage/).

The survey also asked Divisions about the benefits of NMRA membership and again the responses were all over the place. Education was a common theme, offering clinics at each monthly meeting, hands on or live demonstrations, use of a video camera and a projector to project the clinic onto a screen so all could see. What a concept - offering a learning opportunity that everyone in attendance can actually see 'as it is happening'! Some Divisions also actively solicit member input for program topics for their monthly meetings and find out who is knowledgeable about or knows someone knowledgeable about the various topics. One benefit that came up several times is the insurance option for members. Most Divisions do not have their own layouts (some have modular layouts that travel). Some have company stores while others thought they were too much work and too costly to maintain.

The frequency of meetings has already been mentioned but a question I would put to the members of WLD is what would you include in the monthly meeting? Some Divisions introduce new members and guests, make announcements about upcoming events and programs, hold photo & model contests, raffles, hold the program, take a break and then visit a layout. Sounds fun!

Continued on Page 7...

## **Mark's Model Railservices**

2007 Lake Aire Dr. Sheboygan, WI 53081

(920) 451-9691 or [markshelly@excel.net](mailto:markshelly@excel.net)

**Professional Results at Reasonable Prices**

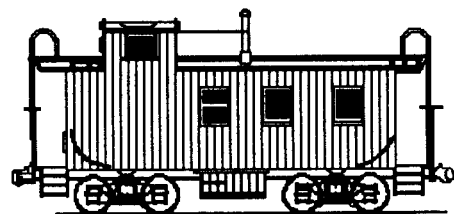
Custom Painting-Locomotive Repowering/Rebuilding

**HO Scale Soo Line a Specialty Including:**

**NEW PRODUCT!**

***"Grade Crossing w/ Rotating Stop Sign!"***

**Perfect For C&NW, SOO, MILW, GB&W and Others!**



Most Divisions did not focus on any particular age group nor do they offer youth-specific programs. Some do try to have the option of youth programming and then will split the group if there are enough youth to hold a separate clinic. The one youth specific program that came up several times was a Boy Scout Merit badge for model railroading. One Division holds a formal program called "build-a-car" where the Division buys low-cost kits and gives them out to children age five or above at a train show. They have an area at the show where one of the members and with the help of the parents, builds the car. Then the child can take it to the modular layout and see their car run before taking it home. The less formal youth clinics are called RailFun clinics. These have a youth focus where parents can bring their children to learn about an aspect of Model Railroading. This Division has seen several go from small child to active module member and a few on to college. If this is not clear enough...they have promoted the hobby to children who have continued to enjoy model railroading throughout their youth into adulthood.

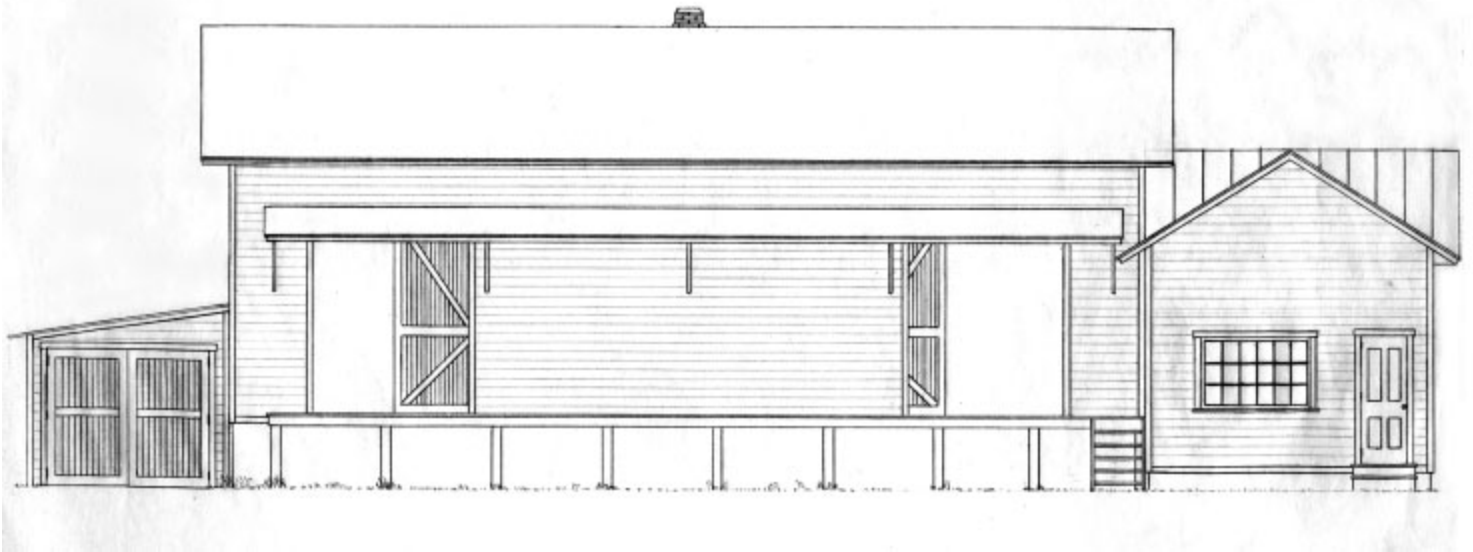
Divisions that actively promote the hobby do so in a variety of ways. "Talking with anyone that will listen" was one response. Another said "We as members are in the hobby shops all the time. We answer questions and make recommendations on how to do things or solve problems. We post our division meetings in newsletter, local hobby shops, and in the region newsletter" and openly invite guests to participate.

The issue of addressing lapsed memberships was found to be an important issue in many Divisions and a time consuming one. Actively seeking feedback from the lapsed members, contacting new members and inviting them to meetings (therefore avoiding the 'lapsed' membership problem), holding regular meetings in a public library (therefore keeping cost at a minimum) to offer clinics and learning sessions was seen as a way of retaining members and gaining members. One Division stated that attendance at meetings ranged from 12 to 22 before they implemented regular clinics at meetings at consistent locations. Now the average attendance is now around 46. One Division cited money as the first barrier and time as the second barrier that keeps people away from NMRA membership and away from NMRA-sponsored events.

The next step

The information I received filled over 18 pages once I had all of the responses typed into a format that made sense to me. What I have presented here is a very brief summary of the survey responses. So now what? Well in this final hard copy of The Whistle you will find a 'NMRA Member Survey' and a self addressed, stamped envelope. Fill out the survey and return it in the envelope provided. We are even going to try to sweeten the thing up a little bit. Fill out the survey (with completed name and NMRA number at the top) and you will be entered for a prize. No cost. No obligation. Just fill out the survey. And your responses will be completely confidential. I am the person who will receive the responses and the identifying information is only to be eligible for the prize. But we need the information.

Some people tend to throw away surveys while others think they take too much time to complete. There are some folks who say, "I've filled out these darned things before and nothing ever seems to come of it. Why bother now?" Or maybe you've said, "I've filled them out before and never hear back what people said." Well I am attempting to create an environment of change here. The results we get are directly related to the input. We are also sending a survey out to hobby shops within the Division boundaries as well as a survey to the various model railroad clubs that lie within the Division. We need to make changes and we need to make them now. But in order to do so, we need your help!



## **W. L. FOSHAY WAREHOUSE NO. 1** **A Small Building Serving the General Public**

by Larry E. Easton

Back in the 50s every town had small businesses served by the railroad. These were usually wooden or brick buildings for specific uses, such as lumber, coal and merchandise of all kinds. The W. L. Foshay warehouse shown here is one of those small buildings that will fit on any model railroad where one or two boxcars can be unloaded.

Wes Foshay was one of the original members of the Winnebagoland Division and this model was built to honor him. Eventually it found a home on John Franzen's HOn3 layout and is currently in storage.

Basic construction is 2-ply poster stock, with 1-ply for the trim boards. The siding was formed by scribing with a sharp razor blade, then grey paint was rubbed on with a cloth. Before the paint set, it was rubbed again to give a weathered effect. Wood grain, knots, etc. were penciled in before the paint was applied. The paint then filled in the indentations.

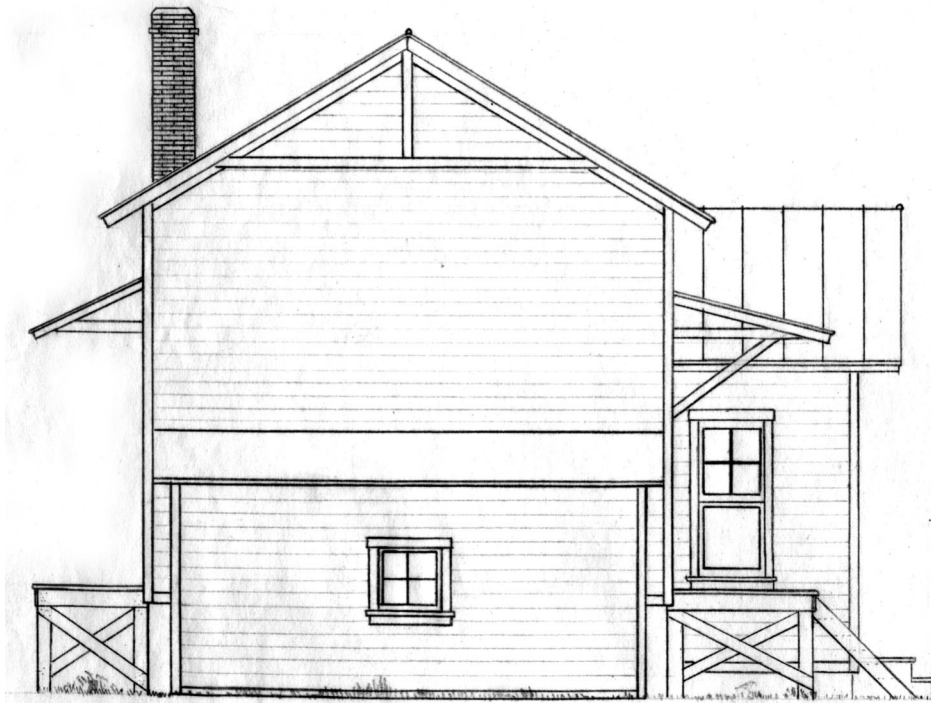
The shell of the building is braced inside with 1/4" square wood. The platforms are Northeastern scale lumber. The roof is aluminum foil, cut into sheets and pressed in a form made from two blocks of serrated hardwood.

The chimney was made from a length of 3/16 square wood, scribed and painted in reds and browns. The color of the building is grey with dark green trim.

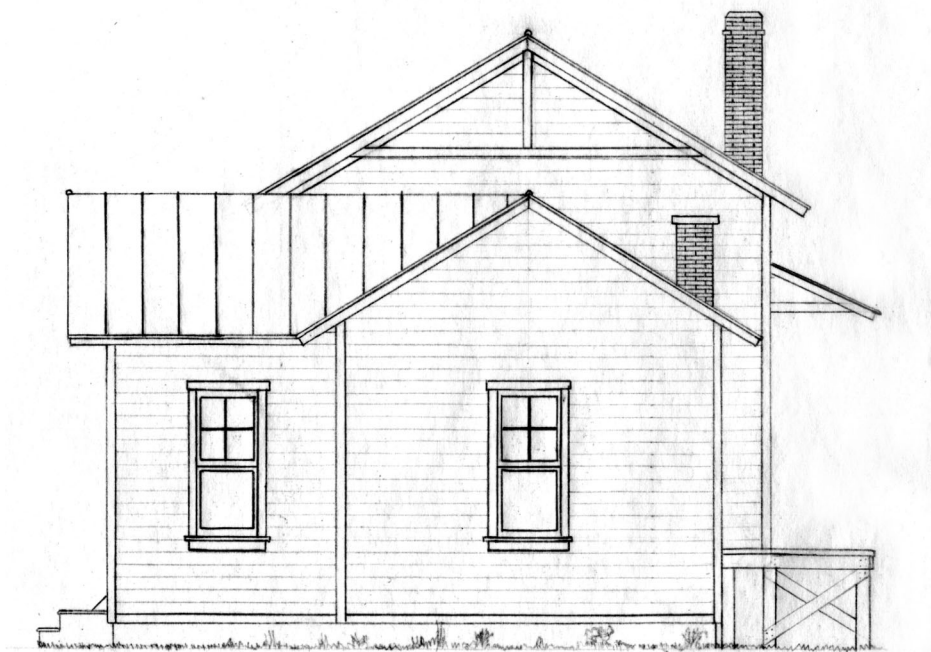
Photos by Dave Peterson.

*More elevations and photos on the following pages. Thanks to Larry Easton for showing us what can be done using poster stock and wood. It looks like it would stand up well in a model contest today. This beauty could find a new home on the Manitowoc Branch Larry! -ed.*





*Note: Drawings reduced from full size HO scale originals. Not to scale as printed. -ed.*



**Hoffman**  
www.hoffman.net

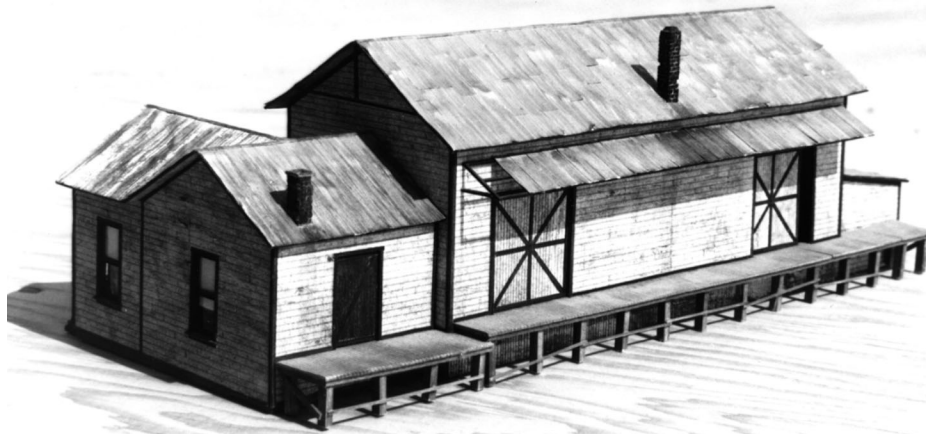
Todd M. Bushmaker AIA  
Job Captain

N434 Greenville Center Appleton, WI 54914  
PO Box 8034 Appleton, WI 54912  
direct 920.380.2132 mobile 920.217.5318  
main 920.731.2322 fax 920.380.2191  
email tbushmaker@hoffman.net

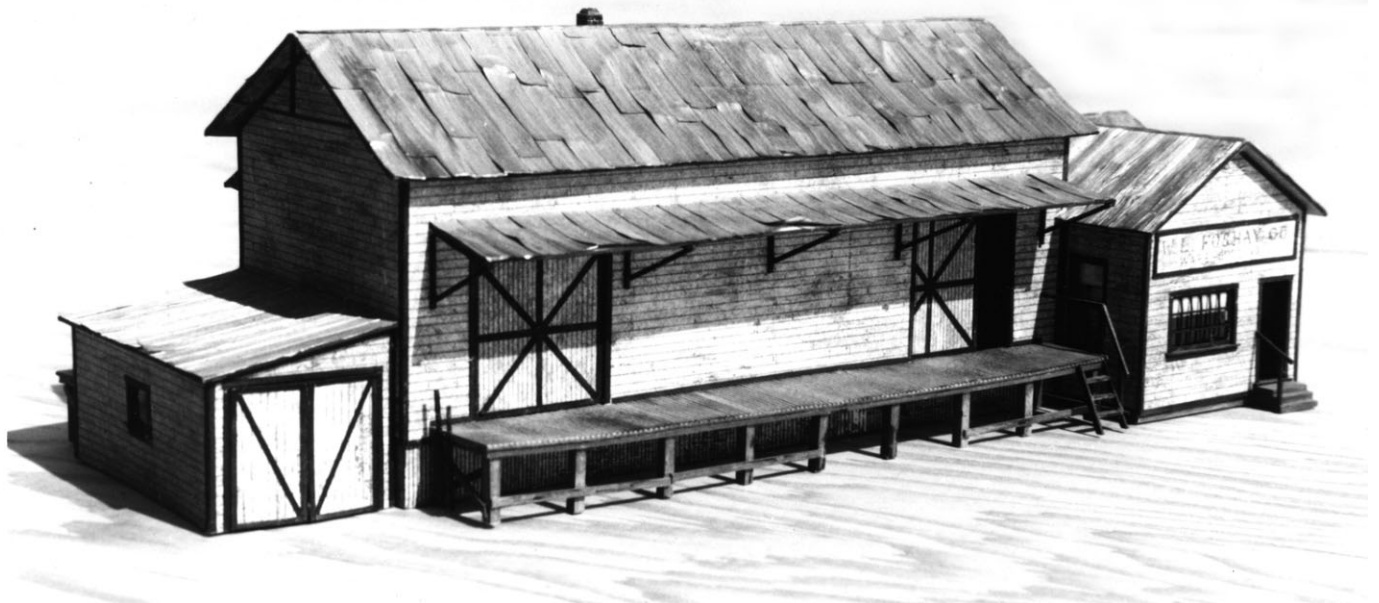
**CLIPPER CITY  
MODEL RAILROAD CLUB**

**LAKE SHORE  
& WESTERN**

Meeting-1<sup>st</sup> Thursday of the Month at 7:30  
Iron Horse Barn at Manitowoc Expo I-43 & US 151  
P. O. Box 2076, Manitowoc, WI 54221  
New members & Visitors Welcome  
N-trak            HO            Lionel



*Trackside, this building is all business. The awning adds a nice touch and allows the modeler to super detail some brackets or supports which would help support it. Note also the different rooflines which could be made to appear as additions made to the building at some point. Below is the front of the building with office. -ed.*



Railroad Adventurers In Large Scale

**R A I L S**



For Information, Contact:  
Larry Easton, *Section Foreman*  
1315 Green Acres Lane  
Neenah, WI 54956-4515  
**TEL: 920-725-4160**  
eMail: [mileposts@sbcglobal.net](mailto:mileposts@sbcglobal.net)



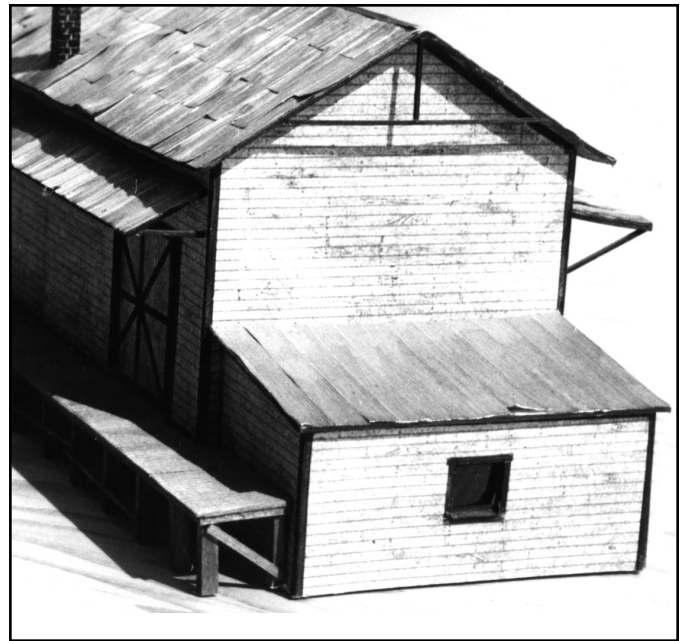
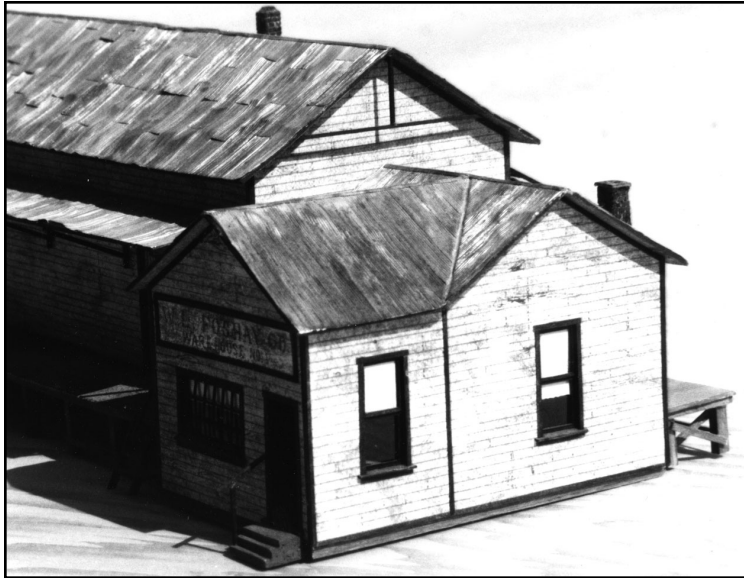
**CENTRAL WISCONSIN MODEL RAILROADERS**

Plover, Wisconsin

**For Information Contact**  
CWMR Secretary  
2203 Strange  
Stevens Point, WI 54481

- HO, N Scale & Lionel
- Modular Railroading
- Serving Hobby Enthusiasts of Central Wisconsin

**Wes Foshay Building...**



*Note the fineness of the window panes and steps. The windows look like Grandt Line products, but very well could be from scratch. Outstanding weathering on the building and especially on the sign. -ed*



**Paul Hillmer**  
Branch Manager

1011 North Lynndale Dr Ste 1A  
Appleton, WI 54914  
Office: (920) 954-0512  
Toll Free: (800) 659-1909  
Fax: (920) 954-0664  
Cell: (920) 475-2659  
Email: phillmer@umc123.com

America's first choice for home financing - umc123.com



**Paper Valley Model Railroad Club**

2221 Block Rd - Kaukauna, WI

THUR: 7:30 - 9:00 p.m. - SAT 1:00-4:00 p.m.



Inc.  
1946

MEMBERSHIPS  
OPEN

MAILINGS TO:

BRIAN JACOBS  
1301 FREEDOM ROAD  
LITTLE CHUTE, WI 54140



## Getting Published 101

-or-

“How to Get Your 15 Minutes of Fame”

By: Mark Preussler

As a young modeler 30-plus years ago one of my goals in the hobby was to someday see my work in one of the major magazines dedicated to model railroading. This all would be dictated by that “dream layout” in my head. You know, the one we all think about when we’re new in the hobby. I didn’t know all the magazines that existed back then, but I soon figured out I wanted my layout to be featured in either *Model Railroader* or *Railroad Model Craftsman* since these were

***EngineHouse Services, LLC***

**Wisconsin's Full Service Train Shop**

**Repair work**

**How-to-do Clinics**

**Digitrax & Soundtraxx DCC Products**

**Custom Painting/Building**

**Decoder Installations**

*Let Us Help You Enjoy the World's Greatest Hobby*

**2737 N. Packerland Dr.**

**Green Bay, WI 54303**

**Phone: 920-490-4839**

**Fax: 920-490-4859**

**[www.enginehouseservices.com](http://www.enginehouseservices.com)**

**[sales@enginehouseservices.com](mailto:sales@enginehouseservices.com)**

***World's Greatest Hobby Supporter***

## SCALE REPRODUCTIONS

*“Specializing in scenery products  
for midwestern railroads”*

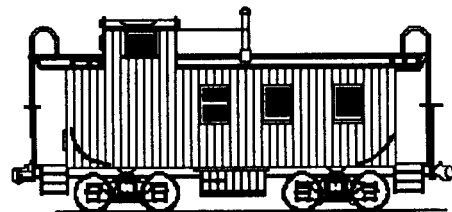
Send LSSAE for more information to:

**SCALE REPRODUCTIONS**

**1120 Cherry Lane**

**SHEBOYGAN, WI. 53081**

Visit us on the web at [www.greatdecals.com](http://www.greatdecals.com)



the ones I would make sure to pick up at the local Rexall Drug down the street from my parents' house. As it turned out, I finally realized that dream earlier this year when I was published in *Model Railroader*. What a thrill! However, I was surprised at the level of attention and the doors which have been opened because of it. So, in no particular order, here's a little background on my experiences and some suggestions from others as well...

I wasn't a complete "newbie" regarding having my work published before the layout article in *MR*.. I contributed to *Railmodel Journal* for several years before with stories on equipment I built. I also had photos used in the Walther's HO book, though my brother Marv was the guy who leaned more towards that end of it.

I guess the biggest misconception I had was that most modelers casually look over the text in a magazine and focus mostly on the pictures and ads like I do. I admit I have **never actually read** any model railroad magazine cover to cover. Most of these voracious readers are what I would call armchair modelers. In some cases all of the information overload may hurt them as they never build anything and continue to read up on doing it "better". Well, there is no one "right" way to enjoy the hobby and I'm sure I could have made less mistakes by reading about how to do it first, but my point is this; I was contacted with really technical questions about the "why's and how's" of my railroad by total strangers who must have studied the track plan like a treasure map! In some cases I had to think about questions as they were asking about things I hardly thought about while building it. The good news is that these folks were all courteous and respectful. Don't let that fear of being critiqued steer you away from writing your story.

I worked on my manuscript for about 3 months on and off and finally was satisfied with what I wrote. I would suggest to you that the easiest method is to just write it down as if you were speaking to a friend. You can come back and add more info or streamline your work after several readings. My goal was to get it published almost the way I wrote it. I basically read and studied how Kalmbach crafts a story and then did my best imitation of their work. I'm sure they appreciate the extra effort! I worked with Cody Grivino at Kalmbach. A good guy for sure, Cody would e-mail me and make sure what he edited to fit his space still matched closely with what I originally wrote.

I'm not a photo guy, but remember that magazines like to use high resolution photos when going digital. A TIFF file or a RAW image is best. Most of my pictures were roughly 15 MB or larger so I burned them on a cd and sent them along with captions for each. Again, a story of what the train is doing and how it fits into the operating scheme is best. Track plan issues? No problem. The illustrators who work at these places can turn napkin scribbles into beautifully detailed layout drawings. I worked with Rick Johnson at Kalmbach. He's one of the best.

A great resource right here in the WLD is Dave Rickaby, who owns his own business called Model Railroad Photojournalism Services. Dave's mission is to highlight some of our fine modelers here in the WLD. Dave will do all the dirty work while you enjoy your work in print! He is no stranger to being published as his original Wisconsin and Michigan was featured in *MR* back in the 1990's and I'm sure his latest version will soon be in print as well. I am glad I did all my own work on my story, but that's not for everyone. His work is well respected and I know you will be pleased with his results.

I mentioned doors being opened at the start of this story. I can think of no better example than the day Chuck Hitchcock contacted me seeing if I was interested in having his operating group over sometime in 2010. Chuck is an avid Santa Fe modeler from the Kansas City area. I remember first seeing his work when Allen Keller worked for Kalmbach and they did a series of videos on great model railroads including Chuck's. Chuck is certainly one of the heroes I have in the hobby and I look forward to getting to meet him next year. Do you think our paths would have crossed if it wasn't for the fact that I was published?

It hasn't stopped at just the social aspect either. I made a new friend and a customer from out in Iowa. This gentleman wanted to visit my layout and noted that I did custom work and DCC installations. He brought along several brass locomotives and several high-end diesels for full Tsunami sound and upgrades. So, in a way the magazine article has paid me several times over since July!

Now, what type of layouts are the magazines looking for? Almost everything is fair game with HO scale being the most popular and transition era still the king. But remember that magazines like variety so if you model the 1910 era you certainly have a great chance at being noticed faster than another 1950's era layout of similar quality- in my opinion.

It's a myth that your layout needs to be 100% finished. Mine is about 65% complete scenic-wise, but totally finished track-wise and electrically speaking. It was enough for Kalmbach and in speaking to Cody he noted that in many cases this leads to a second or third article as more (or a special area) is finished. There is no question though that your layout at least needs to be photogenic and finished in some places if you wish to have it featured as a whole. Think about angles that are viewed and areas where a camera can get close enough to the subject. I would suggest an article on a building or area of your layout as a way to test the waters of a major magazine. You will need to be prepared to have someone look at your work and possibly reject it! However, in most cases some simple changes will make the article worthy of publication.

So, what are you waiting for? If you have a layout that would be worthy of publication get going now. There are people willing to help you at the publishing house and private sector companies like Dave's as well. You never know where it may lead.

### WLD Fall Meet- Plover WI

A small but enthusiastic group of modelers gathered at Spedini's Restaurant in Plover for the Fall Meet. The layout tours were great as were the clinics on photography, working on the CN RR, and building a HO scale version of the Stevens Point depot. Once again we lost members due to other shows in the WLD, a situation that can't happen for good attendance.

The Model Contest was dominated by **Don Kottke with the aforementioned Stevens Point depot which won both Best of Show and Popular Vote.** Showing models were Dave Allen and Marvin Preussler who also entered some weathered freight cars with graffiti.

#### Joe Lallensack Photo Contest Chair gave a rundown of the Photo Contest results:

**Best of Show:** Erik Kolasinski- Prototype Color Print, Union Pacific #3985 meeting a freight in St. Paul, MN

**First Place, Prototype B&W Print:** Richard Zahringer- SP #4449 Eastbound through Detroit Lakes, MN

**Second Place, Prototype B&W Print:** Erik Kolasinski- Milwaukee Road Skytop Lounge at the station

**First Place, Prototype Color Print:** Richard Zahringer- SP #4449 at Larimore, ND

**Second Place, Prototype Color Print:** Richard Zahringer- CN Ballast train at Dale, WI

My thanks go to Randy Williamson and Chic Hartert in assisting me in the judging of the photos. There were only 8 entries from 2 people, just like the contest in the spring. However, I would like congratulate Erik Kolasinski for entering the first time and doing quite well. I again would like to state that more entries make a better contest for everyone! When we hold our next contest at the spring meet, I hope to see more people participating. Whether it is prototype or model, print or slide, or

color or black and white, we would like to see it. The primary criteria are that the prints be at least 5" by 7" and, because of handling during judging, they should be mounted. Good luck to you all!

### WLD Operating Session

We had a good turnout for the annual operating session this year. It was held in the Appleton area on November 7th. I would like to thank Joel Weeks, Bill Moede, Paul Hillmer and the Paper Valley Model RR Club for opening their layouts. We had almost 2 dozen folks involved (counting our hosts) and that made for some fun operating. I can't stress enough that this event is perfect for the non-NMRA member as well. We had several new faces along with the regulars.

We do not have a location for set for 2010, but chances are we should be ready to go and announce it during our spring meet. Look for pictures from the event along with the latest news regarding future Operating Sessions at the website.

### WLD Spring Meet 2010

May 15th is the date and Menomonie MI is the place for our Annual Meeting of Members and Spring Meet. This promises to be a good time. We are going to really promote this as a public show with a full day of model railroading. We have a location that will allow vendors and displays to leave their items up during the afternoon and the facility will be securely locked in the evening which will allow tear-down of layouts or sales tables at your convenience on Sunday am. Why not plan on making a weekend of it if you are a dealer or are involved in a modular club. More details, including cost and times will be available on our website as well as by a planned mailing during early 2010.

### Winnebagoland NMRA In Action

Calling ALL East-Central Area NMRA members! The WLD is planning a FREE MEET to be held in Plymouth WI in March of 2010. This is a good opportunity for those who live nearby (Manitowoc, Fond du Lac, Sheboygan, etc) to volunteer some time at the show, to answer questions, and to perhaps give a clinic. Please contact Mark Preussler or James Cruthers if you can help us out. We are looking for basic clinics geared towards beginners. A slide/ DVD show on the prototype as well a modeling presentation are planned. The location is tentatively set at the Plymouth Public Library unless we need more room.

Updates on this event as well as times and a firm schedule will appear on our website early next year.

### WLD T-Shirts Here Now!

Our Division will have a series of NEW T-SHIRTS ready for sale at the Arctic Run Train Show, TTS, the WLD Spring Meet, as well as mail order through our Company Store found at our website. These shirts are screen printed with our logo and website information. Look for them at our new traveling display during a show near you and visit [www.wld-nmra.com](http://www.wld-nmra.com) for photos of them in our company store !

**PLYMOUTH MODEL RAILROAD SOCIETY**  
 414 E. MILL ST. DEPT B  
 PLYMOUTH WI 53073  
 920-893-9552



26'X46' HO SCALE LAYOUT  
 UNDER CONSTRUCTION

WORK ON LAYOUT MONDAY NIGHT 6:30 TO ?  
 RUN TRAINS WEDNESDAY NIGHT 6:30 TO 9 PM  
 CLUB OPERATING SESSIONS AS POSTED

**MEMBERSHIP OPEN**

**New London Historical Society**  
 C&NW Depot Museum, C&NW #11153 Caboose,  
 Soo #138 Caboose, Laona #101 Diesel

Open 1<sup>st</sup> & 3<sup>rd</sup> Sundays, 1 PM to 4 PM, and by appointment,  
 June – July – August

For information, call: (920) 982-8557 or (920) 982-5186

**Annual Heritage Days and Rail Fest**  
**First Sunday of August**  
 900 Montgomery Street  
 New London, WI



# ON THE READY TRACK



- Jan 15, 2010- All-Star Railroad Night- 1025 North Broadway- MSOE 3<sup>rd</sup> Floor  
Student Center- Bob Baker presents a program on the Fox River  
Valley Railroad- Starts at 7:30 pm
- Jan 16, 2010- WLD Board of Directors Meeting- Stevens Point, WI
- Jan. 16-17, 2010- Arctic Run Model RR Show & Sale- Ramada Hotel- Stevens Point,  
WI- Contact Tim Victor at (715) 341-4469
- Jan. 30, 2010- Great Tri-State Rail Sale- La Crosse Center- 2<sup>nd</sup> & Pearl Streets  
La Crosse, WI Phone (608) 781-9383 or [www.4000foundation.com](http://www.4000foundation.com)
- Feb. 5, 2010- All-Star Railroad Night-MSOE- 1025 N. Broadway, Milwaukee, WI  
Clinics by Bob Gallegos & Dave Stanley
- Feb 5-14, 2010- Northeastern Wisconsin O Gauge Model Train Show  
Van Veghel Auction House- 2050 Profit Pl. Hwy 57 South  
Depere, WI Info at [www.newogaugers.org](http://www.newogaugers.org) or [www.rllines.com](http://www.rllines.com)
- Feb 13-14, 2010- Barron County Model Railroad Club Annual Railroad Show  
Cedar Mall- Rice Lake, WI Call Joe at: (715) 450-9526  
Or Call Jon at: (651) 303-4889 Free Admission
- Feb 20-21, 2010- Mad City Model Railroad Show- Alliant Energy Center- Madison, WI  
Info at [www.nmra-scwd.org](http://www.nmra-scwd.org)
- March 6-7, 2010- Traintime 2010- MSOE Student Center-1025 N. Broadway  
Milwaukee, WI- Free Admission 10:00am-5:00 pm
- March 14, 2010- Model Railroad Show & Swap Meet- Circle B Recreation Center  
6261 Hwy 60, Cedarburg, WI Info at [www.metrorrclub.org](http://www.metrorrclub.org)  
Or call Jim Bartelt at (262) 284-5876
- April 10-11, 2010- 9<sup>th</sup> Annual Model Train Show- Menomonie Middle School  
920 21<sup>st</sup> Street South- Menomonie, WI Info at: (715) 505-4044



**MERRY CHRISTMAS AND  
HAPPY HOLIDAYS FROM  
SANTA AND THE STAFF AT  
THE WINNEBAGOLAND  
WHISTLE! SEE YOU ONLINE  
AT [WWW.WLD-NMRA.COM](http://WWW.WLD-NMRA.COM)**